

CITY OF CANTON

TRANSPORTATION MASTER PLAN JANUARY 2023



APPENDIX C NEEDS ASSESSMENT



APPENDIX C

NEEDS ASSESSMENT TABLE OF CONTENTS

PLANNED PROJECTS

Maps of Planned Projects
List of Planned Projects

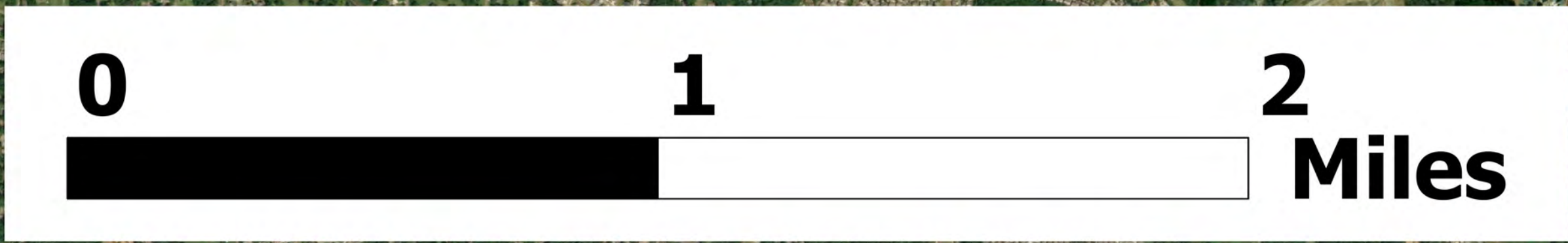
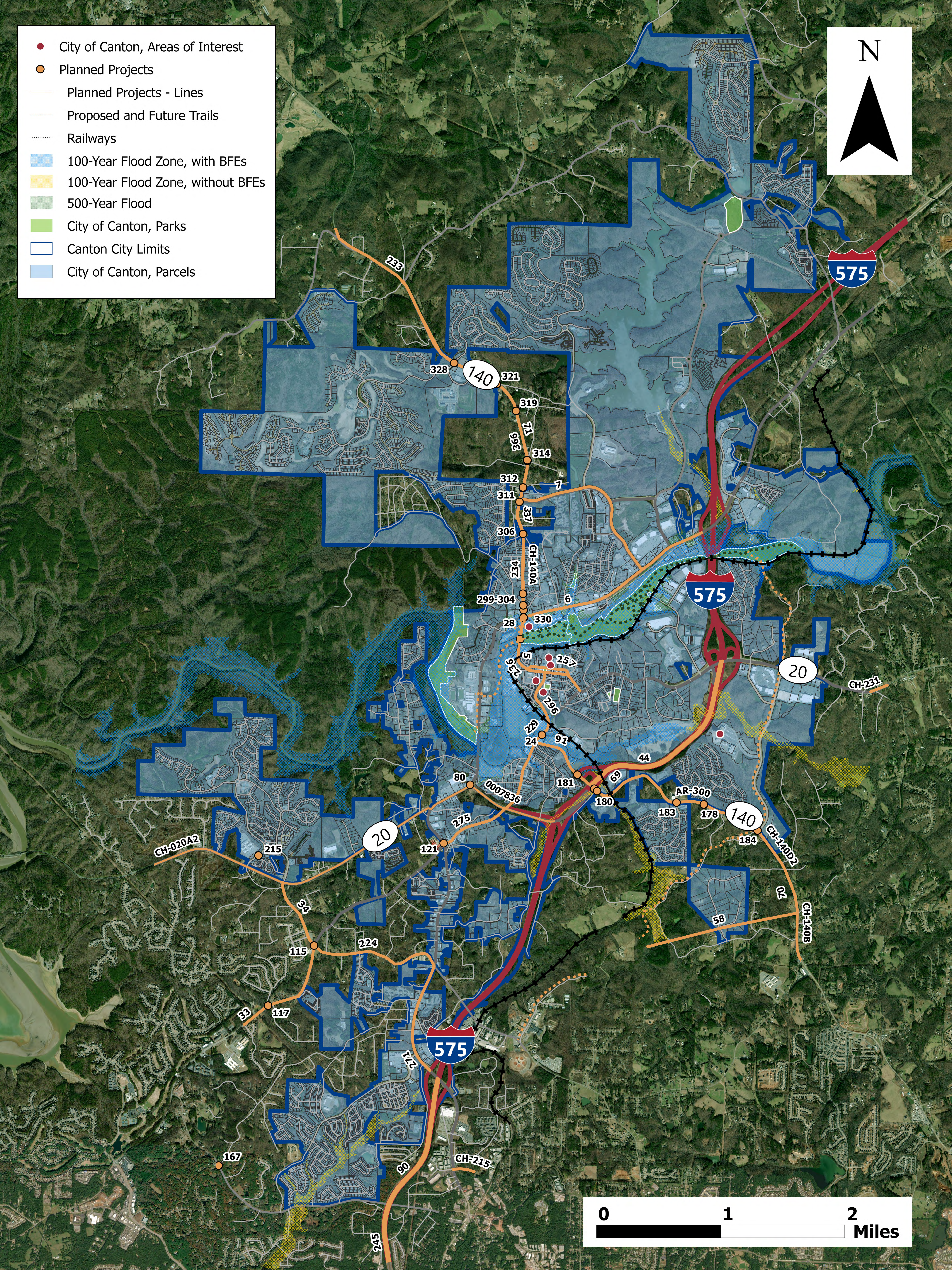
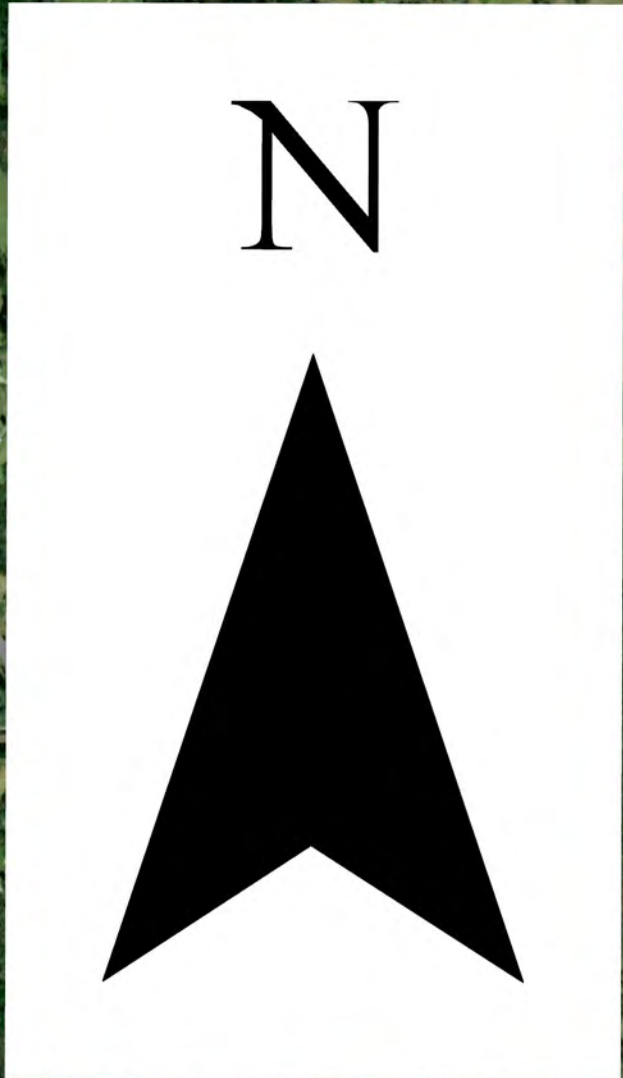
INTERNAL WORKSHOP

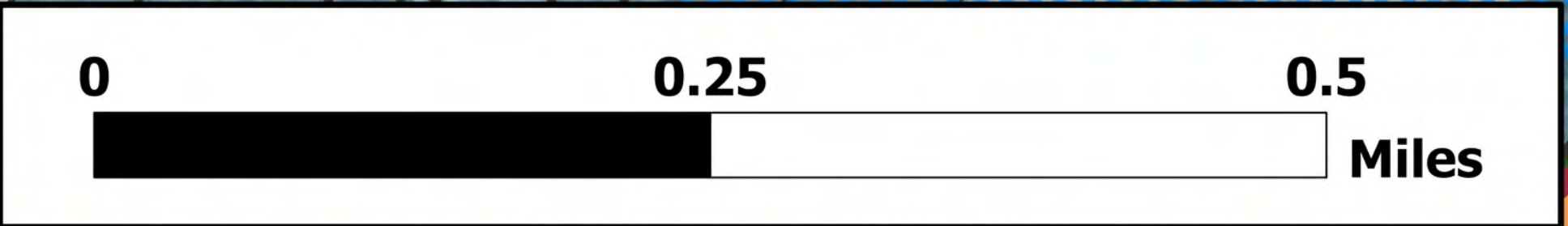
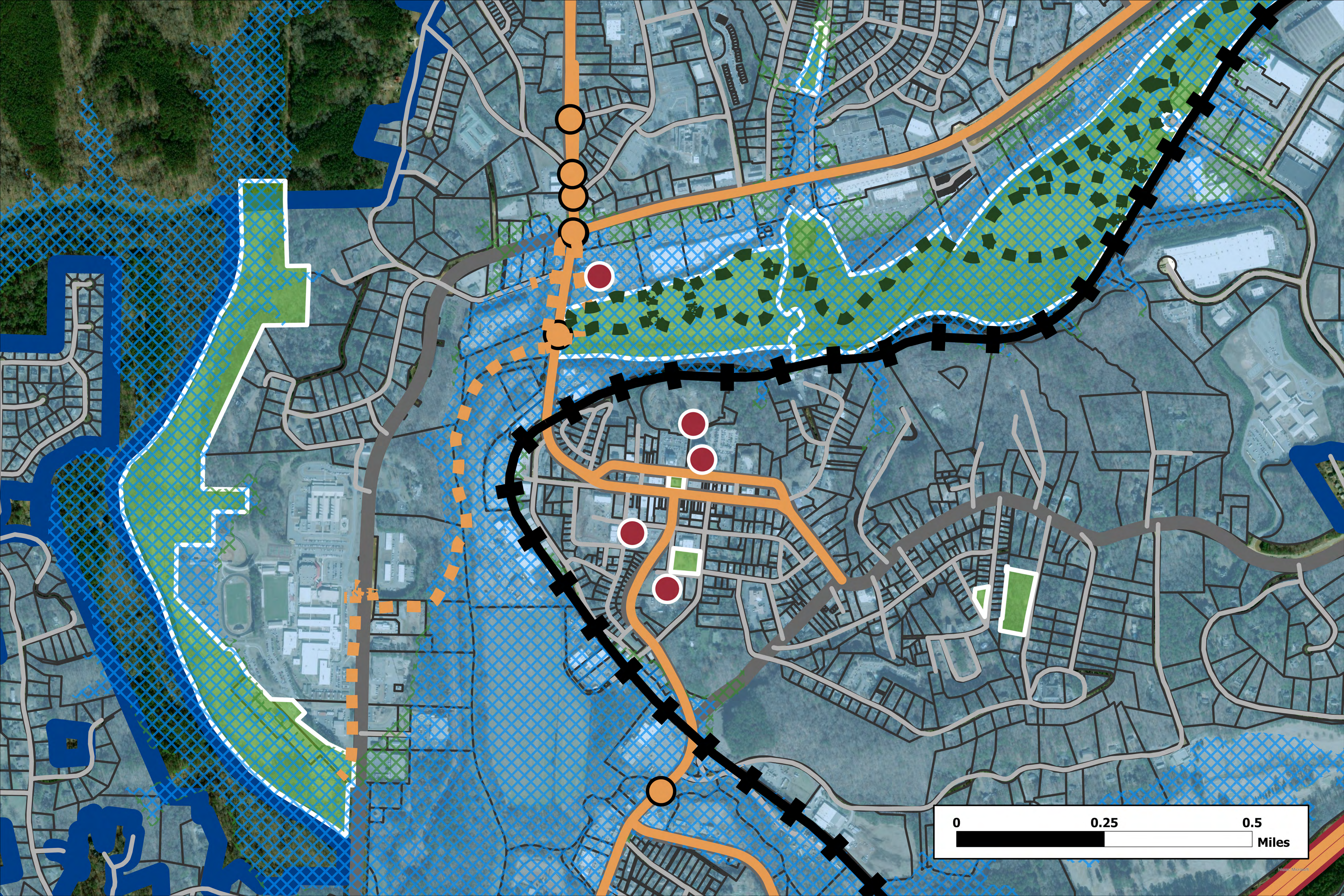
Livability Projects
Economics Projects
Transportation Systems Projects
All Workshop Projects
Workshop Notes
Draft Project List

NEEDS ASSESSMENT PRESENTATION

PLANNED PROJECTS

- City of Canton, Areas of Interest
- Planned Projects
- Planned Projects - Lines
- Proposed and Future Trails
- ⋯ Railways
- 100-Year Flood Zone, with BFEs
- 100-Year Flood Zone, without BFEs
- 500-Year Flood
- City of Canton, Parks
- Canton City Limits
- City of Canton, Parcels





FID	Id	CTP_ID	Category	RoadName	Details	Source	SourceID	Comment from Public?	Notes
23	0	CTP-24	Bridge	MARIETTA STREET	CANTON CREEK	2022 Needs Assessment	314		
34	0	CTP-28	Bridge	WALESKA STREET	ETOWAH RIVER	2022 Needs Assessment	326		
38	0	CTP-80	Intersection	SR 20/SR 140	at SR 20/Marietta Highway	2022 Needs Assessment	45	✓	Specific comment to expand SR 140
42	0	CTP-181	Intersection	SR 140	I-575 SB On and Off Ramps	SR 140 Study	1	✓	Could discuss a quick response to restripe at interchange and install larger signage to direct drivers. raised concrete to separate I-575 Northbound exit to delineate left and right turn lanes. Discuss with GDOT removing one of the left turn signals as it causes confusion that there are two left turn lanes.
43	0	CTP-179, CTP-180	Intersection	SR 140	I-575 NB Ramps	SR 140 Study	3	✓	
44	0	CTP-182	Intersection	SR 140	Lower Scott Mill Rd	SR 140 Study	4	✓	
45	0	CTP-183	Intersection	SR 140	Mountain Vista Blvd	SR 140 Study	5	✓	Specific comment to signalize intersection
46	0	CTP-184, CTP-185	Intersection	SR 140	North Cherokee Blvd	SR 140 Study	6	✓	
54	0	CTP-178	Intersection	SR 140	Hillcrest Dr	SR 140 Study		✓	Option: Add dedicated EB LT lane at Hillcrest Drive
69	0	CTP-121	Intersection	Bells Ferry Road	at Marietta Hwy	Bells Ferry Corridor Study			
78	0	CTP-117	Intersection	Bells Ferry Road	at Gold Mill Ridge	Bells Ferry Corridor Study			
79	0	CTP-115, CTP-116	Intersection	Bells Ferry Road	at Butterworth Rd	Bells Ferry Corridor Study			
95	0	CTP-299	Intersection Improvement	SR 140	Riverstone Pkwy/Marietta Hwy	SR 140 (North) Corridor Study			
96	0	CTP-300	Intersection Improvement	SR 140	Walgreens Driveway/Hospital Rd	SR 140 (North) Corridor Study			
97	0	CTP-301	Intersection Improvement	SR 140	Shoal Creek Rd	SR 140 (North) Corridor Study			
98	0	CTP-302	Intersection Improvement	SR 140	Shoal Creek Rd	SR 140 (North) Corridor Study			
99	0	CTP-303	Intersection Improvement	SR 140	Mary Ln	SR 140 (North) Corridor Study			
100	0	CTP-304	Intersection Improvement	SR 140	Mary Ln	SR 140 (North) Corridor Study			
101	0	CTP-306	Intersection Improvement	SR 140	Hospital Rd/Old Donaldson	SR 140 (North) Corridor Study			
102	0	CTP-307	Intersection Improvement	SR 140	Hospital Rd/Old Donaldson	SR 140 (North) Corridor Study			
103	0	CTP-308	Intersection Improvement	SR 140	Hospital Rd/Old Donaldson	SR 140 (North) Corridor Study			
104	0	CTP-309	Intersection Improvement	SR 140	Hospital Rd/Old Donaldson	SR 140 (North) Corridor Study			
105	0	CTP-305	Intersection Improvement	SR 140	Shoal Creek Rd	SR 140 (North) Corridor Study			
106	0	CTP-311	Intersection Improvement	SR 140	April Street to North of Vandiver Rd	SR 140 (North) Corridor Study		✓	
107	0	CTP-312	Intersection Improvement	SR 140	April Street to North of Vandiver Rd	SR 140 (North) Corridor Study			
108	0	CTP-313	Intersection Improvement	SR 140	April Street to North of Vandiver Rd	SR 140 (North) Corridor Study			
109	0	CTP-314	Intersection Improvement	SR 140	Belletta Dr to Pearidge Rd	SR 140 (North) Corridor Study			
110	0	CTP-315	Intersection Improvement	SR 140	Belletta Dr to Pearidge Rd	SR 140 (North) Corridor Study			
111	0	CTP-316	Intersection Improvement	SR 140	Belletta Dr to Pearidge Rd	SR 140 (North) Corridor Study			
112	0	CTP-317	Intersection Improvement	SR 140	Belletta Dr to Pearidge Rd	SR 140 (North) Corridor Study			
113	0	CTP-318	Intersection Improvement	SR 140	Belletta Dr to Pearidge Rd	SR 140 (North) Corridor Study			
114	0	CTP-319	Intersection Improvement	SR 140	Cross St	SR 140 (North) Corridor Study			
115	0	CTP-320	Intersection Improvement	SR 140	Cross St	SR 140 (North) Corridor Study			
116	0	CTP-321	Intersection Improvement	SR 140	Pearidge Road	SR 140 (North) Corridor Study			
117	0	CTP-322	Intersection Improvement	SR 140	Pearidge Road	SR 140 (North) Corridor Study			
118	0	CTP-323	Intersection Improvement	SR 140	Pearidge Road	SR 140 (North) Corridor Study			
119	0	CTP-324	Intersection Improvement	SR 140	Pearidge Road	SR 140 (North) Corridor Study			
120	0	CTP-325	Intersection Improvement	SR 140	Pearidge Road	SR 140 (North) Corridor Study			
121	0	CTP-326	Intersection Improvement	SR 140	Pearidge Road	SR 140 (North) Corridor Study			
122	0	CTP-327	Intersection Improvement	SR 140	Pearidge Road	SR 140 (North) Corridor Study			
123	0	CTP-328	Intersection Improvement	SR 140	Laurel Canyon/Great Sky	SR 140 (North) Corridor Study			
124	0	CTP-329	Intersection Improvement	SR 140	Laurel Canyon/Great Sky	SR 140 (North) Corridor Study			
125	0	CTP-330	Intersection Improvement	SR 140	Riverstone Pkwy/Marietta Hwy	SR 140 (North) Corridor Study			
126	0	CTP-331	Intersection Improvement	SR 140	Riverstone Pkwy/Marietta Hwy	SR 140 (North) Corridor Study			
127	0	CTP-332	Intersection Improvement	SR 140	Riverstone Pkwy/Marietta Hwy	SR 140 (North) Corridor Study			
128	0	CTP-333	Intersection Improvement	SR 140	Riverstone Pkwy/Marietta Hwy	SR 140 (North) Corridor Study			
129	0	CTP-334	Intersection Improvement	SR 140	Riverstone Pkwy/Marietta Hwy	SR 140 (North) Corridor Study			
130	0	CTP-335	Intersection Improvement	SR 140	April Street to North of Vandiver Rd	SR 140 (North) Corridor Study			
131	0	CTP-310	Intersection Improvements	SR 140	Hospital Rd/Old Donaldson to	SR 140 (North) Corridor Study			
142	0	CTP-167	Intersection	Ridge Road	Holly Street	Citizen Request			
143	0	CTP-168	Intersection	Riverstone Parkway	Waleska St/SR 140				
148	0	CTP-215	Emerging Technology	Riverbend Way	John Know Elementary School	2022 CTP Needs Assessment			

FID	CTPID	Category	Road	ExtentFrom	ExtentTo	Details	Source	SourceID	Comment from Public?	Notes
18	CTP-44	Capacity	I-575	SR 140/Hickory Flat Highway	SR 20/Cumming Highway	Widening	2022 Needs Assessment	26	✓	Comment related to more capacity for buses
19	CTP-275	Safety	Marietta Road	Marietta Highway	Hickory Flat Highway	Safety Improvements	2022 Needs Assessment	39		
20	CTP-229	Operational Improvement	Marietta Road	Hickory Flat Highway	East Street	Operational Improvement at Marietta Road at Hickory Flat Highway intersection	2022 Needs Assessment	40	✓	
21	CTP-296	Safety	W Marietta Street	Marietta Road	E Main Street	Safety Improvements (LOS Okay for downtown area)	2022 Needs Assessment	43		
22	CTP-5	Bicycle/Pedestrian	North Street	SR 140/Waleska Street	E Main Street	Bike/Ped infrastructure improvements	2022 Needs Assessment	44		
23	CTP-257	Safety	E Main Street	SR 140/Waleska Street	East Street	Safety Improvements	2022 Needs Assessment	45	✓	
24	CTP-236	Operational Improvement	SR 140/Waleska Street	W Main Street	Highway/Riverstone Parkway	Operational Improvements (Currently Programmed in ARC TIP)	2022 Needs Assessment	46	✓	Specific comment to expand lanes and install pedestrian walkway
25	CTP-234	Operational Improvement	SR 140/Waleska Street	Marietta Highway/Riverstone Parkway	Reinhardt College Parkway	Operational Improvements (Currently Programmed in ARC TIP)	2022 Needs Assessment	47	✓	Specific comment is to increase roadway capacity
26	CTP-233	Operational Improvement	SR 140/Waleska Street	Laurel Canyon Park	Puckett Creek Road/Lower Burris Road	Operational Improvements (Currently Programmed in ARC TIP)	2022 Needs Assessment	49		
33	CTP-271	Safety	Marietta Highway	I-575	Butterworth Road/Univeter Road	Access Management/Safety Improvements	2022 Needs Assessment	74	✓	
34	CTP-6	Bicycle/Pedestrian	Riverstone Parkway	SR 20/Waleska Road	I-575	Bike/Ped infrastructure improvements	2022 Needs Assessment	77		
41	CTP-7	Bicycle/Pedestrian	Reinhardt College Parkway	SR 140/Waleska Road	Riverstone Parkway	Bike/Ped infrastructure improvements	2022 Needs Assessment	102	✓	Recommend this improvement be an 8-10 foot sidewalk on the north/east side of the road.
50	CTP-33	Capacity	Bells Ferry Road	Marina	Butterworth Rd	BFR widening	Bells Ferry Road Corridor Study			
51	CTP-34	Capacity	Butterworth Road	Bells Ferry Rd	SR 20	Butterworth Widening	Bells Ferry Road Corridor Study			
52	CTP-224	Operational Improvement	Butterworth Rd	Old Hwy 5	SR 20		Unmapped			
55	CTP-245	Operational Improvements	I-575	Mile Marker 12	Exit 14					
56	CTP-71	Capacity	SR 140	Riverstone Pkwy	Fincher Rd					
57	CTP-58	Capacity	New Roadway	Hickory Float Hwy	Chattin Dr					
59	CTP-336	Corridor	SR 140	Riversort Pkwy/Marietta Hwy	Laurel Canyon Rd/Great Sky	Long term: convert to 4-lane w/ median	SR 140 (North) Corridor Study			
60	CTP-337	Corridor	SR 140	Riversort Pkwy/Marietta Hwy	Laurel Canyon Rd/Great Sky	Long term: add multi-purpose paths along corridor	SR 140 (North) Corridor Study			
61	CTP-70	Capacity	SR 140	Northside Cherokee Blvd	Harmony Lake Dr	Widening	SR 140 Corridor Study			
62	CTP-69	Capacity	SR 140	I-575	Northside Cherokee	Widening			✓	Specific comment to expand SR 140
68	CTP-90	Freight	I-575 Hwy N	Holly Springs	Woodstock	Freight Capacity Concerns	2022 Freight Needs	1		
74	CTP-91	Freight	SR 140/Hickory Flat Hwy	West of SR 20		Freight Capacity Concerns	2022 Freight Needs	4		

Addressed in Canton and Cherokee draft recs

OBJECTID	PROJECT ID	PROJECT NAME	PROJECT TYPE	PRIM WORK TYP	STATUS	Category	PROJECT DESCR	FUNDING TYP	FUNDING SOURCE	COUNTIES	CITIES	ROUTE NUMS
567	0007836	SR 20 FROM I-75/BARTOW TO I-575/CHEROKEE	Reconstruction / Rehabilitation	Widening	Construction Work Program	Widening	The project study area includes the SR 20 interchange with I-75 in Bartow County and the interchange with I-575 in Cherokee County, as well as 36 intersections along the SR 20 corridor between the two interstates. Major intersections along the corridor include SR 294, Bells Ferry Road/Wilderness Camp Road, Fincher Road/Highway 108, Fields Landing Drive, River Green Avenue/Butterworth Road, Marietta Highway/Highway 140, and Hickory Flat Highway/Highway 140. Some of the development along the corridor includes residential streets and neighborhoods, the Vulcan Quarry, the Georgia National Cemetery, Knox Elementary School, River Greene Academy, and Teasley Middle School. There are also commercial developments along the corridor in the areas adjacent to the two interstates.	NEPA	Federal	Bartow, Cherokee	Canton	002000

ARCID	PRJ TYPE	LOCATION	STATUS	PRJ DESC	EXTENTS	SPONSOR	GDOTPI	Exist Lane	Prop Lanes
CH-231	Roadway / General Purpose Capacity	Cherokee County	Programmed	SR 20 (CUMMING HIGHWAY) WIDENING	FROM SCOTT ROAD TO UNION HILL ROAD	GDOT	14131	2	6
CH-020A2	Roadway / General Purpose Capacity	Regional - Northwest	Programmed	SR 20 (CUMMING HIGHWAY / KNOX BRIDGE HIGHWAY) WIDENING	FROM I-75 NORTH IN BARTOW COUNTY TO I-575 IN CHEROKEE COUNTY	GDOT	7836	2	4
AR-300	Roadway / Operations & Safety	Multi-County	Long Range	SR 140 OPERATIONAL AND SAFETY IMPROVEMENTS IN CHEROKEE COUNTY AND NORTHERN FULTON COUNTY	FROM I-575 TO SR 9 (ALPHARETTA HIGHWAY)	GDOT	0	2	2
CH-140D2	Roadway / General Purpose Capacity	Cherokee County	Long Range	SR 140 (HICKORY FLAT ROAD) WIDENING	FROM I-575 TO EAST CHEROKEE DRIVE	GDOT	13892	2	4
CH-215	Roadway / General Purpose Capacity	Cherokee County	Programmed	HICKORY SPRINGS PARKWAY - NEW ALIGNMENT	FROM HOLLY SPRINGS PARKWAY TO HICKORY ROAD	City of Holly Springs	0	0	4
CH-140A	Roadway / Operations & Safety	Cherokee County	Programmed	SR 140 OPERATIONAL IMPROVEMENTS	AT RIVERSTONE PARKWAY / MARIETTA HIGHWAY	City of Canton, Cherokee County	TBD	N/A	N/A
CH-140B	Roadway / Operations & Safety	Cherokee County	Programmed	SR 140 OPERATIONAL IMPROVEMENTS	AT UNIVETER ROAD	Cherokee County	TBD	N/A	N/A

Category	Road	From	To	Project Description	Identified by Public	Notes
Roadway	East and West Main Street	Railroad St	Brown St	Downtown reconfiguration to convert Main St to two way, leave North Street as one way and convert to service street with loading zones. Remove road connections and parking on either side of square and extend pedestrian plaza. Add flashing pedestrian lights with push buttons at crosswalks. Reconfigure intersections of Main and North on either side of downtown to roundabouts or 4-way stops. Reconfigure parking to parallel converting parking on North St to more service orientation like loading zones and ridershare. This can be flex zones using technology and colored lights to indicate approved use by time of day. Parking on Main will be primarily handicap and convert all intersections along Main (Archer, Church, E. Marietta and Dupree) to all way access with potential for 4-way stops. Extend sidewalks where feasible to increase walking and outdoor dining space. Convert Railroad St to right in right out at Waleska.	Yes	Specific comments related to roundabouts, traffic calming, more connectivity to downtown and intersection issues at Railroad St. Specific comment to raised crosswalks in downtown but that poses issues for emergency response. Good example of flashing pedestrian signage in downtown Athens. Flex zone technology could be timed lighting and associated signage to indicate what the space should be used for during that time (e.g., loading/transit stop during day, rideshare pick up in the evening and weekend). Bike lanes were suggested from the public - could look at shared space component, but may not be enough space for dedicated bike lanes.
Roadway	East and West Main Street	North St	North Street	Convert both ends of downtown to roundabout or realign for 4-way stops	Yes	
Intersection	Northside Cherokee Blvd	Target Entrance		Recommend to property owners to reconfigure parking to require vehicles to take first left into parking aisle and install bollards in front of the store to prevent vehicle access. This will keep traffic flowing and not overflow into intersection. Comments included sidewalk improvements, but sidewalks, crosswalks, and ramps are all present in this area.	Yes	
Intersection	E Main St	Dr John T Pettit St		Install approaching vehicle flashing light for blind curve	Yes	
Intersection	Marietta Rd	Hickory Flatt Hwy (SR 140)		Install roundabout at intersection with driveway for future connection	Yes	
Roadway	Cherokee	Dr John T Pettit St	Hospital Cir	Install traffic calming such as speed cushions	Yes	
Roadway	Jeanette	Hospital Cir	E Main St	Install traffic calming such as speed cushions	Yes	
Bike/Ped				Create a Sidewalk Infill Program funded through impact fees and recreation fees to fill in sidewalk gaps where development will not install sidewalks. Prioritize equity areas, near schools, near transit stops and along major roadways.	Yes	May not be able to evaluate this project. More of a policy recommendations. Provide a list of sidewalks that were specifically identified along with map of sidewalk gaps.
Bike/Ped	Reservoir Dr	Reinhardt College Pkwy	Canton First B	Add bicycle lanes to 4-lane section		Sidewalk is complete on east side of road. Sidewalks to infill on west side as development occurs or through the Sidewalk Infill program.
Bike/Ped	Reservoir Dr	Canton First Baptist	Great Sky	Add bicycle sharrows on pavement to indicate bicycle presence.		Specific comment to address driveway cuts and visibility issues. There are not very many driveway cuts and as development occurs, traffic impact analyses will have to be done to reassess any intersection controls.
Wayfinding	Downtown			Add additional wayfinding signage to public parking facilities, primarily at west and east entrances to downtown on Main St/North St and approaching cross streets such as E Marietta, Church, Archer. Could add signage at Dr John T Pettit St and Brown St.	Yes	
Intersection	Reinhardt College Pkwy	Riverstone Plaza		Intersection improvement - could be signal if warranted or other improvement	Yes	
Intersection	Riverstone Pkwy	Riverplace Shopping Center		Intersection improvement - could be signal if warranted or other improvement	Yes	
Bike/Ped	Marietta Rd	Railroad Crossing		Install crosswalk on Marietta Rd at Dr. John T Pettit St with flashing signage to encourage pedestrians to cross railroad along sidewalk with ramp.		
Transit	Xpress			Discuss extended Xpress Bus Route up to Canton. Park and ride location at Etowah River Park.	Yes	Specific comment about extending Xpress to Canton. Park and Ride location should be near I-575, but it was suggested Etowah River Park in comments.
Transit	CATS Improvements			Create a standing coordination meeting or team with CATS to discuss potential upgrades or service changes based on community feedback.	Yes	Specific comments include adding bus turn lanes (could be pull offs) in the downtown area, expanded hours of service to better serve workforce, launch a transit connection between Canton and Woodstock, provide transit access to the Mill on Etowah. This project will not be evaluated.
Bike/Ped		E Main St	Northside Cherokee	Off road trail beginning at E Main St through the Northside Hospital vacant property on the southwest quadrant of I-575, under I-575 utilizing and expanding the existing culvert of Canton Creek to the Northside Hospital and extend to Northside Cherokee Blvd.		Expand sidewalks on Northside Cherokee from hospital north to SR 20 as development occurs or as part of the Sidewalk Infill Program.
Bike/Ped		Shoal Creek Rd	Boling Park/Et	Upgrade existing trail and service road to provide trail connection between developments to the north and park/trail system		Could be a partnership with the Boy Scouts of America and their existing nature trails.
Bike/Ped	Shipp Street	E Main St	Heritage Park	Add a 10-foot sidewalk along Shipp Street and pedestrian bridge over the Etowah River to Heritage Park		Could be included in grant applications that the Housing Authority is working on.
Bike/Ped	Marietta Hwy	SR 20	Prominence P	Add either 10-foot sidewalk on one side or 5-foot sidewalks on both sides of road.		
Bike/Ped	Off Road Trail	Reservoir Dr.	Hickory Log C	Add multiuse trail along school properties to connect schools to surrounding sidewalk network.		This trail can connect to future trails around the reservoir. Specific comment to building sidewalks on both sides of Hickory Log Creek. It is anticipated sidewalks to be built with new high school.
Recreation	Canton Community Center	Cherokee High School		Convert high school to city community center in partnership with Cherokee County Schools.		Not to be evaluated but to be included in recommendations.
Bike/Ped	Off Road Trail	Marietta Hwy and SR 140 Intersection	Jessie McColl	Utilize power easement to create a multiuse trail to directly connect two parts of the City and back sides of adjacent neighborhoods.		
Bike/Ped	Brown Industrial Road	Cumming Hwy	Etowah River	Add 10-foot sidewalk along the road to connect neighborhoods south of Cumming Hwy and Hasty Elementary to Etowah River Park and Trail system.		

Category	Road	From	To	Project Description	Identified by Public	Notes
Bike/Ped	Rail with Trail	Mill at Etowah	Chattin Dr	Add a trail adjacent to the railroad starting at the Mill at Etowah and following the railroad south and southwest to the proposed trail ending on Chattin Dr.		Would need to be in partnership with the railroad and Cherokee County. There is guidance on "Rail with Trails" from USDOT including agreements (https://www.fhwa.dot.gov/environment/recreational_trails/publications/rwt2021/)

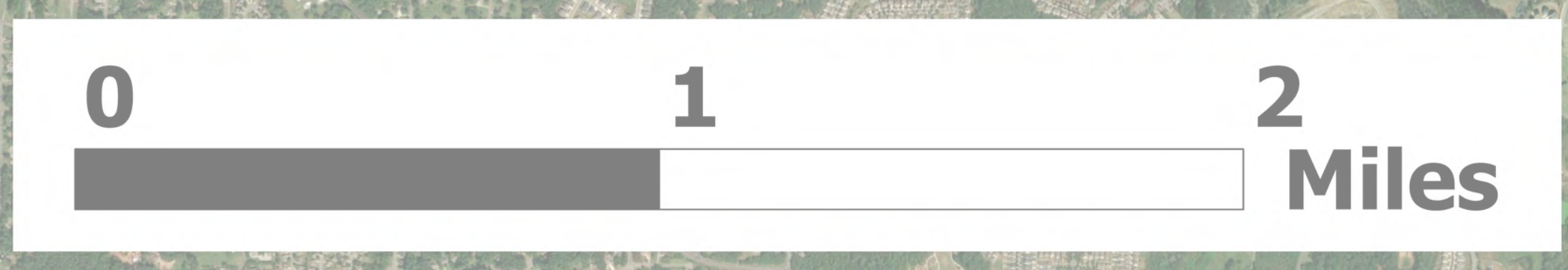
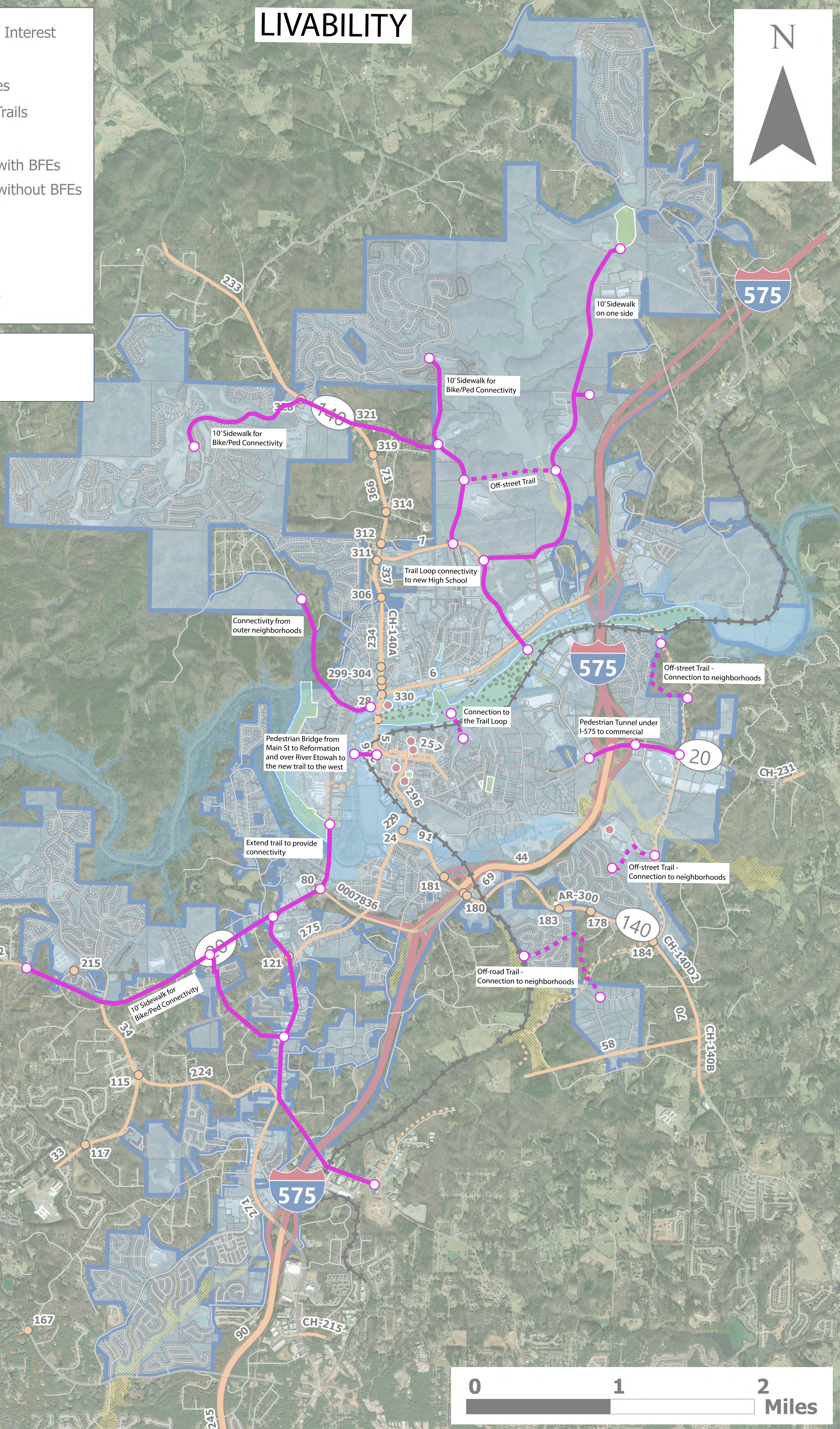
INTERNAL WORKSHOP

LIVABILITY

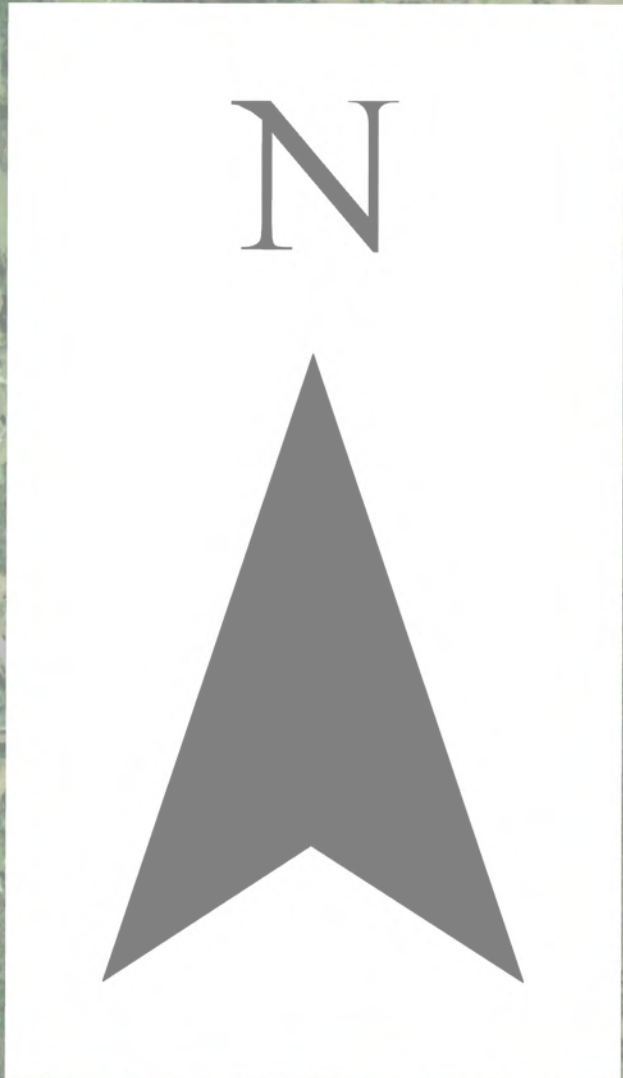


- City of Canton, Areas of Interest
- Planned Projects
- Planned Projects - Lines
- Proposed and Future Trails
- Railways
- 100-Year Flood Zone, with BFEs
- 100-Year Flood Zone, without BFEs
- 500-Year Flood
- City of Canton, Parks
- Canton City Limits
- City of Canton, Parcels

- LEGEND (LIVABILITY)**
- - On-Street Connection
 - - Off-Street Connection

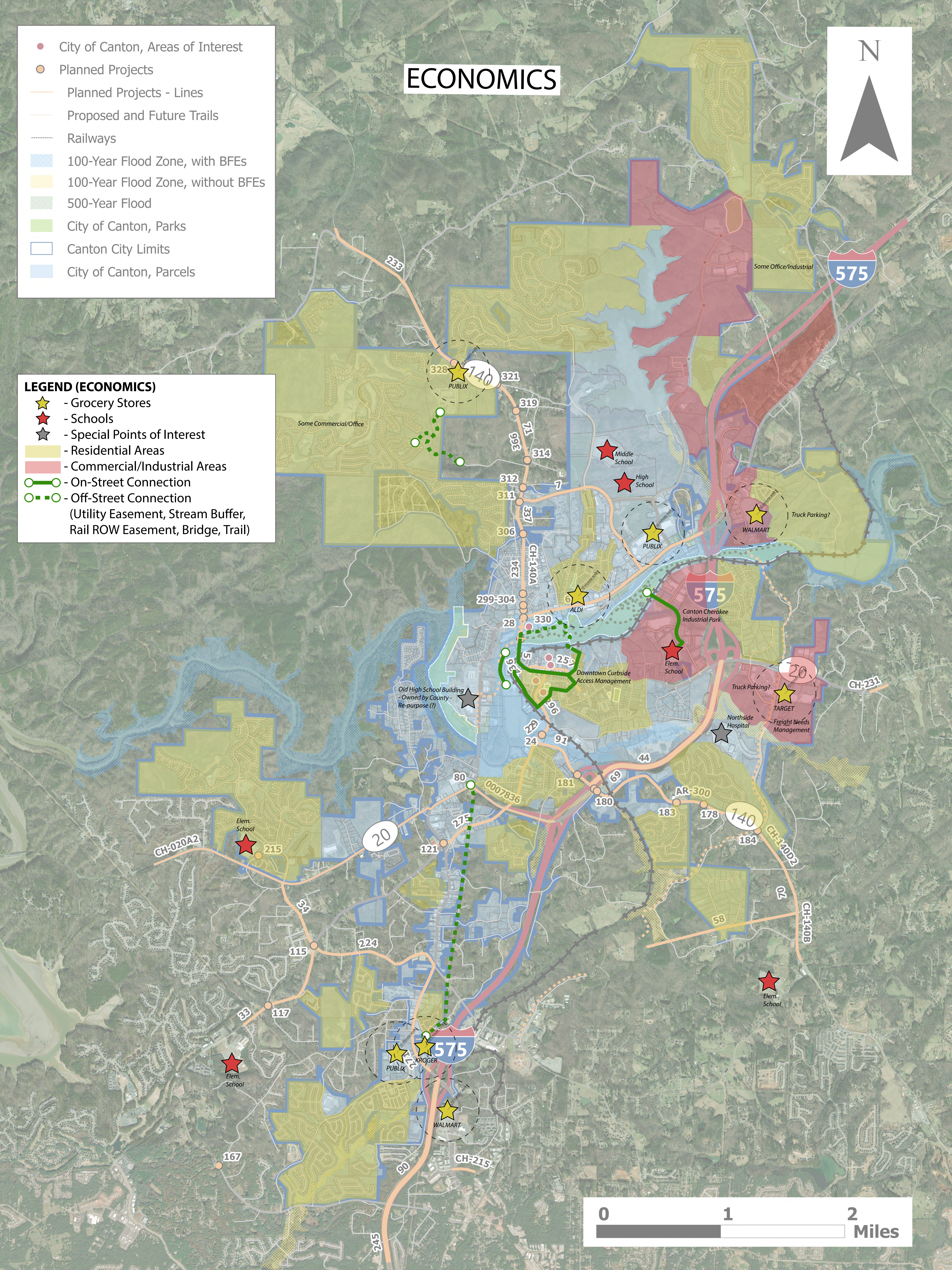


ECONOMICS



- City of Canton, Areas of Interest
- Planned Projects
- Planned Projects - Lines
- Proposed and Future Trails
- ⋯ Railways
- 100-Year Flood Zone, with BFEs
- 100-Year Flood Zone, without BFEs
- 500-Year Flood
- City of Canton, Parks
- Canton City Limits
- City of Canton, Parcels

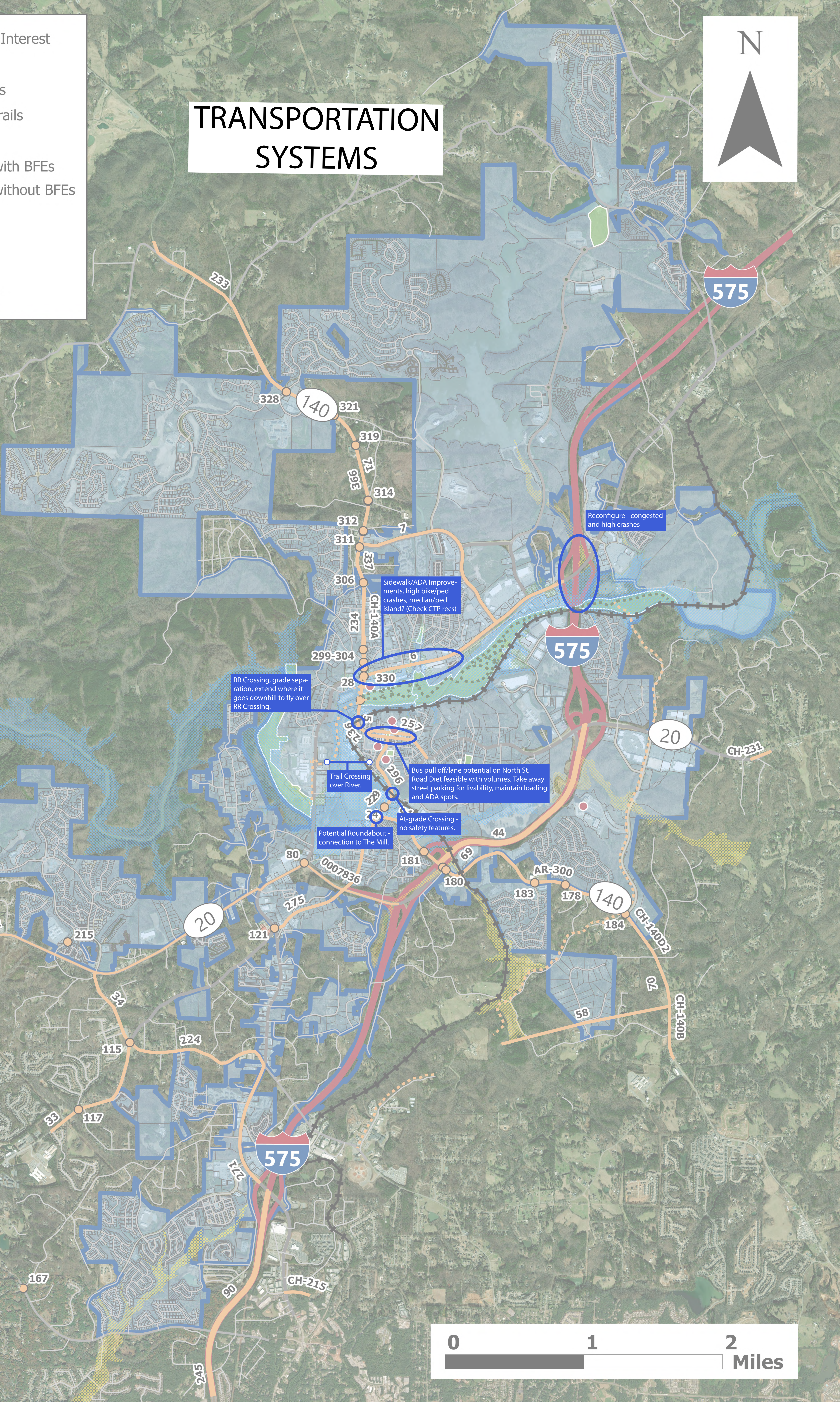
- LEGEND (ECONOMICS)**
- ★ - Grocery Stores
 - ★ - Schools
 - ★ - Special Points of Interest
 - - Residential Areas
 - - Commercial/Industrial Areas
 - - On-Street Connection
 - - Off-Street Connection
(Utility Easement, Stream Buffer, Rail ROW Easement, Bridge, Trail)



TRANSPORTATION SYSTEMS



- City of Canton, Areas of Interest
- Planned Projects
- Planned Projects - Lines
- Proposed and Future Trails
- ⋯ Railways
- 100-Year Flood Zone, with BFEs
- 100-Year Flood Zone, without BFEs
- 500-Year Flood
- City of Canton, Parks
- Canton City Limits
- City of Canton, Parcels



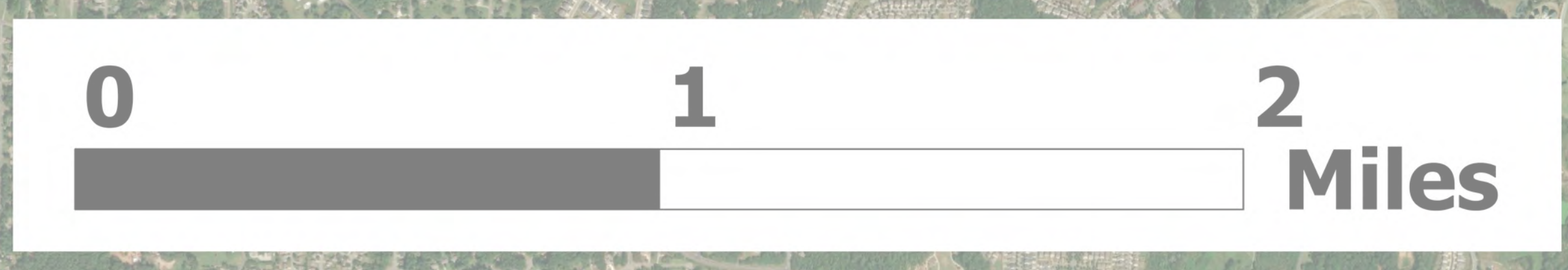
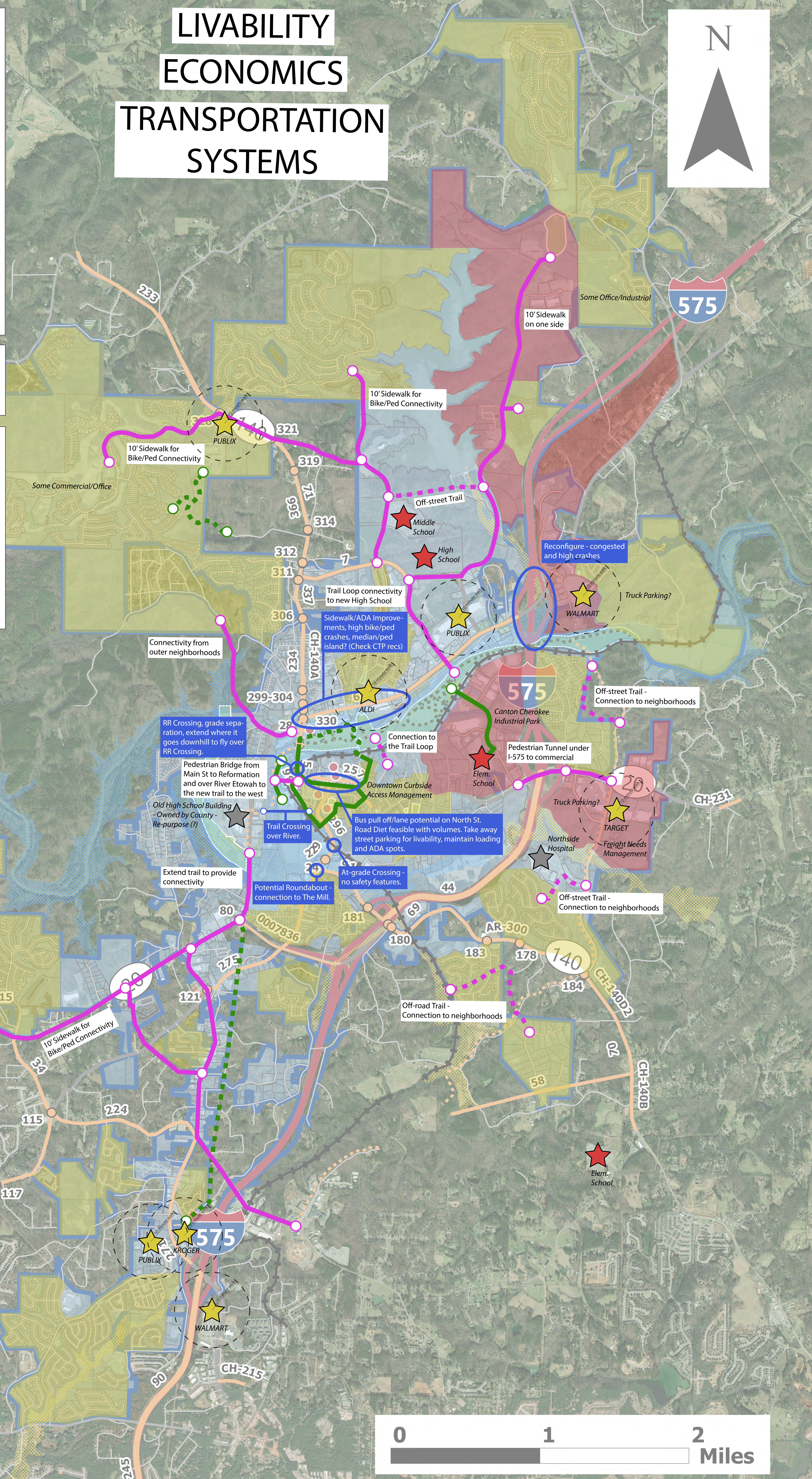
LIVABILITY ECONOMICS TRANSPORTATION SYSTEMS



- City of Canton, Areas of Interest
- Planned Projects
- Planned Projects - Lines
- Proposed and Future Trails
- ⋯ Railways
- 100-Year Flood Zone, with BFEs
- 100-Year Flood Zone, without BFEs
- 500-Year Flood
- City of Canton, Parks
- Canton City Limits
- City of Canton, Parcels

- LEGEND (LIVABILITY)**
- — ○ - On-Street Connection
 - - - ○ - Off-Street Connection

- LEGEND (ECONOMICS)**
- ★ - Grocery Stores
 - ★ - Schools
 - ★ - Special Points of Interest
 - - Residential Areas
 - - Commercial/Industrial Areas
 - — ○ - On-Street Connection
 - - - ○ - Off-Street Connection
- (Utility Easement, Stream Buffer, Rail ROW Easement, Bridge, Trail)



City of Canton
Transportation Master Plan
Needs Assessment - Internal Workshop
June 9, 2022 (8:30am to 12pm)
WORKSHOP NOTES

Attendees:

- Modern Mobility Partners
 - Kirsten Mote, Project Manager, AVP & Director of Smart Mobility Planning
 - Malaika Faciane, Task Manager, Senior Traffic Engineer
 - Chirag Date, Deputy Project Manager, Senior Urban Designer/Planner
 - Candace Foster, Project Planner, Transportation Planner
 - Amber Berg, Project Planner, Transportation Planner
 - David Hogan, Project Planner, Transportation Intern
 - Anqi Wei, Project Planner, Transportation Intern
- Practical Design Partners
 - Angela Snyder, Project Engineer, President
 - Ian Maxfield, Project Engineer

This consultant workshop was conducted at the Modern Mobility Partners offices in Downtown Atlanta. All the attendees were asked to bring their ideas and research to the workshop to have a brainstorming session as the team moves towards a running list of projects for the City of Canton.

In the first hour of the workshop, the team did a recap of the existing conditions discussing any interesting topics based on the data collected. The attendees also looked at various comments collected via Wikimap which will stay active till end of July.

From 9:45am to 11am, attendees divided themselves into three groups with various areas of interests for each group. Kirsten Mote and Malaika Faciane floated in between the groups to facilitate discussions and answer questions. Following are the areas of interest under the three groups:

Livability

- Wayfinding
- Access Management
- Safety
- Multimodal Connectivity
- Transit
- Active Transportation

Economics

- Future Projects and Development
- Land Use
- Freight

Transportation Systems

- Fixed Route Performance
- Parking Accommodation
- Railroad interaction
- Traffic Operations
- Smart Mobility

Following are the summarized notes from three groups followed by the Next Steps.

Livability

- Enhance trail loop connectivity by building upon existing and proposed/planned trails.
- Connect bike/pedestrian connections to new school.
- Extend the trail south of Boling Park to the nearest intersection then make sidewalk upgrades to the road (add wider sidewalks 20') to keep the connectivity going.
- Add ten-foot sidewalks in green (south SR 20).
 - Rural enough for ten-foot sidewalks (5-foot sidewalk presently) to allow bikers to get to trails.
 - Provides city flexibility with construction and design than trail.
- Add ten-foot sidewalks on SR 140 through northern neighborhoods.
- Connect high school to current trail.
- Older neighborhoods don't have sidewalks – add connectivity to trails.
- Pedestrian bridge across Main Street and railroad crossing (already proposed?) and then another across the river to connect to the proposed/planned trail along the west side of the river.
- Ped tunnel under I-575 interchange:
 - Existing interchanges don't have room for sidewalks. With all the shops on the other side, no way to get peds from one side to the other.
 - Interchange appears to be fairly new. Probably won't be reconstructed any time soon.
- Bus corridor
 - Uses 575 to 20 – potentially provide an alternate, more accessible bus route to alleviate congestion on on/off ramps – enhance with sidewalk connectivity and access management. Provide more connections to bus stops (or additional bus routes?).
 - Many retirement communities and doctors' offices near existing bus stops
 - No sidewalks connecting bus stop.

Economics

- Looked at land use, connections, freight
- Most residential is single family. Mostly to the north and south. Some pockets near the downtown.

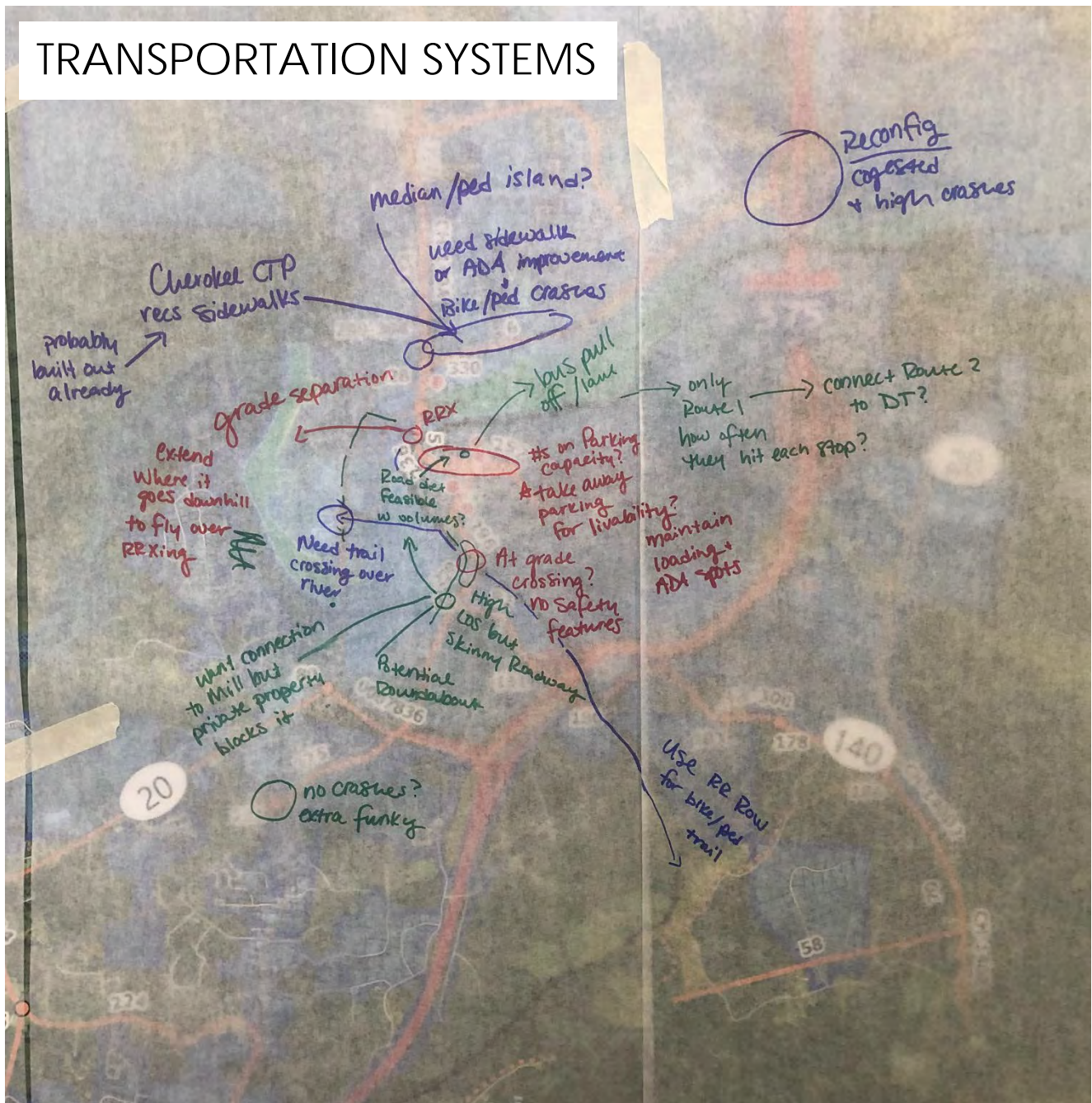
- How close are amenities to residences? Ideally a 10 to 20 min walk (0.5- or 1-mile radius)
- Identified amenities like grocery stores and schools. Provide safer bike/ped connections.
- Freight access to target and other shops nearby.
- For Downtown, use side streets for freight and have dedicated loading zones.
- Curbside access management plan for downtown
 - Side streets for parking or freight
- Route to school via trail at elementary school(s)
- Repurpose old high school to the west of the river to a Recreation Center or other suitable use.
- Bike/ped connection across river and railroad crossing
 - Currently only one bike/ped access point between heritage park and downtown.
- Possible connection at water facility downtown where existing road is.
- Park behind Kroger and Publix – then utility easement to the intersection of Marietta Road and Bells Ferry Road.
 - Simplify the intersection to create park/amenity space.
 - Not a lot of crashes recorded at the intersection though.
- Explore using railway ROW easement for trails along rail lines.

Transportation Systems

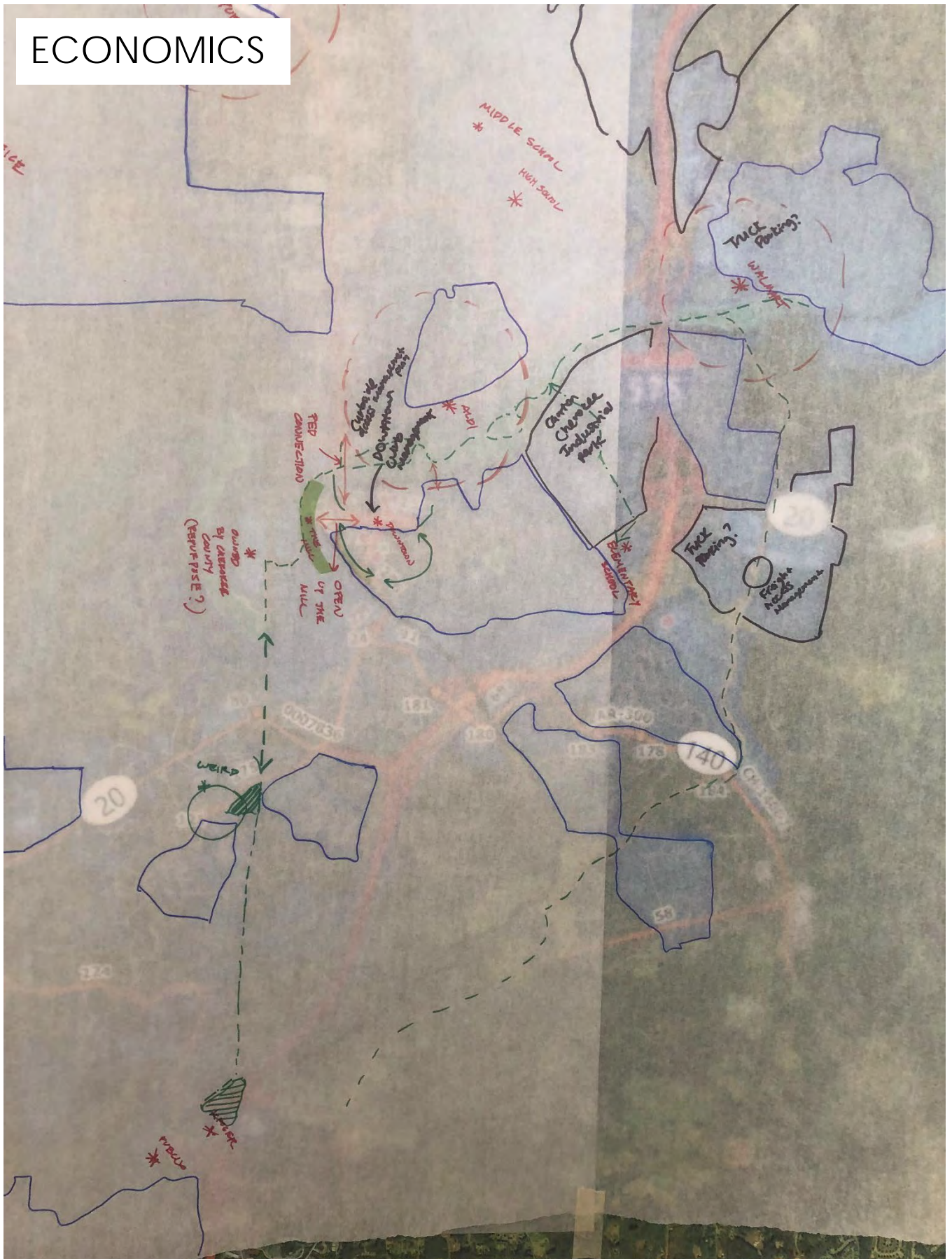
- I-575 and Riverstone interchange
 - Congestion and crashes
 - Improve signal timing or reconfigure (diverging diamond)
- Riverstone Parkway has a lot of crashes and highest rate of ped crashes
- At-grade RR crossings near downtown
 - Marietta Road crossing to the south of downtown has no signal or safety features
 - Poor road condition
 - Opportunity for gateways, consistent placemaking, complete street-feel to bring people into downtown
- Downtown
 - Convert on-street parking to loading zones, dining, bus pull in, flex zone
 - Integrate technology (sensors, etc. to regulate) to maintain downtown historic character and different uses
 - Wayfinding for parking
 - Flexible curb space – curb space management plan
 - Parking inventory
 - Road diet for the flex zones if kept one way
 - 11,000 AADT both ways on DT roads
- Rail ROW to connect two trails
 - Maybe use technology
- Livability technology downtown

- o Illuminated crosswalks (sensor or push button)
- Possibly adjust roundabout to go straight into brewery and alleviate railroad crossing issue.

Following are some pictures of the work session during the workshop. The summary will provide a cleaner version of map/s documenting these notes as an attachment.



ECONOMICS



LIVABILITY





Next Steps

- Send a workshop summary out to the internal team and the city.
- Verify the notes from the workshop with the issues identified through Wikimap to see that all the issues are accounted for. If certain issues are not worked on, provide a reason as to why.
- Work towards finalizing the draft running list of recommendations. Coordinate with the task leader for specific tasks and next steps.
- Team will present existing conditions and gathering more input at the public meeting, not the draft recommendations.
- Present the notes, draft recommendation ideas to the Council in a mini work session to get their input.

Draft Project List

Legend

Identified from Internal Workshop

Identified from Wikimap Comments

Identified from Both

Intersection Improvements

- Intersection improvements at Railroad St and Waleska St – visibility and signalization
- Improve downtown circulation
- *Install roundabout at North St and Waleska St*
- *Install roundabout at North St and E Main St, including pedestrian crossings*
- Intersection and turn lanes improvements on Marietta Highway at Travis Tritt Lane, add sidewalk to connect to existing sidewalk near Ridge Rd and connect to bus stop
- Intersection improvements with school zone signalization improvements and pedestrian crossing improvements at E Main St and Brown Industrial Pkwy
- Install roundabout at E Marietta St and W Marietta St, just south of downtown
- Intersection improvements at Waleska St, Riverstone Pkwy, and Marietta Hwy; turn lane improvements between Waleska Rd and Hospital Dr
- Waleska St and Reinhardt College Pkwy intersection improvements
- Install roundabout at Bells Ferry Rd at Marietta Hwy
- Intersection and pedestrian improvements on Northside Cherokee Blvd by Target
- Intersection improvement at Academy St and Archer St
- Intersection improvement at Fate Conn Rd and Canton Hwy (just south of I-575)
- Install roundabout at Dr John T Pettit St and E Main St
- Intersection and signal improvement from Hickory Flat Hwy to Know Bridge Hwy
- Lane improvements at E Main St and E Marietta St
- Improve visibility and intersection of Waleska Rd and Shoal Creek Rd
- Intersection safety improvement on Shoal Creek Rd at N Etowah Dr
- Install roundabout on Marietta Hwy at Herndon Ln
- Install intersection on Cumming Hwy at shopping center (Target/ATT) between Marketplace Dr and Old Doss Dr
- Intersection improvement/left turn improvement on E Main St to Dupree St

Access Management

- Extend W Main St to Reformation Parkway
- Increase roadway capacity from Reinhardt College Pkwy to Waleska Rd
- Expand lanes and install pedestrian walkway along Waleska Rd
- Install shoulder on N Etowah Dr
- Expand SR 140
- Cumming Hwy roadway capacity
- Roadway widening on N Etowah Dr from Beech Knoll Dr to N Etowah Ct

Roadway Maintenance

- Lane re-striping on Cumming Hwy at I-575 interchange, particularly 19A exit
- Lane striping on Old Donaldson Rd

Safety

- Safety improvements on Riverstone Parkway
- Traffic calming and raised crosswalks downtown
- Roadway safety improvement on Knox Bridge Hwy at Hickory Flat Hwy to I-75

Parking

- Downtown wayfinding for parking and destinations, particularly North St and E Main St, Brown St, WB E Main St, Dr John T Pettit St, and Canton Cannon Park
- Reconfigure downtown parking, particularly North St and Church St
- Dedicate flex zone space in downtown for dining, rideshare, and deliveries

Signalization and Technology

- I-575 and Riverstone interchange and signalization improvements
- Utilize technology downtown to improve illumination and safety for pedestrians downtown
- Integrate technology to regulate downtown loading zones and parking consistent with historic character
- Traffic signal timing improvement at Northside Cherokee Blvd and Cumming Hwy
- Traffic signal timing improvement at E Cherokee Dr and Cumming Hwy [outside city limits]
- Signalization on Hickory Flat Hwy at Mountain Vista Blvd
- Improve signalization on Hickory Flat Hwy at Philip Landrum Memorial Hwy exit ramp
- Signalization on Reinhardt College Pkwy at Reservoir Dr
- Signalized entry from Riverstone Blvd to Home Depot
- Signalized entry from Reinhardt College Pkwy to Riverstone Plaza
- Signalized entry from Riverstone Pkwy to Riverplace Shopping Center

Rail Crossing

- Railroad crossing safety improvements at crossing on Marietta Road south of downtown
- Reconfigure proposed roundabout west of downtown to directly connect to the Mill on Etowah and alleviate railroad crossing concerns

Freight

- Dedicate downtown side streets to freight
- Establish dedicated loading zones for freight in downtown

Transit

- Implement bus corridor or alternate bus route on I-575 during peak periods to improve travel times and avoid congestion
- Implement bus pull-off lane for downtown stops
- Pedestrian and transit access to Mill on Etowah on Reformation Pkwy

Bike/Ped

- Pedestrian bridge connecting W Main Street and the Mill on Etowah across the railroad crossing
- Pedestrian bridge across the Etowah River to connect W Main St to the planned trail
- Install bike lane on E Main St at Roy St [along E Main St from downtown to Roy St?]
- Improve pedestrian connectivity/pedestrian facilities from Riverstone area to Industrial Park
- Pedestrian tunnel under I-575 interchange along SR 20/Cumming Hwy
- Add ten-foot sidewalks along SR 20 between Boling Park and Legend Creek Dr
- Add ten-foot sidewalks along SR 140 between Riverstone Pkwy and Lower Burris Rd/Puckett Creek Rd
- Extend median and add pedestrian islands along Riverstone Parkway between SR 140 and Reinhardt College Parkway
- Bike/ped bridge connecting Heritage Park to downtown via Oak St at the water facility south of the Etowah River
- Add ten-foot sidewalks on both sides of Marietta Hwy between SR 20 and Hembredge Dr
- Add ten-foot sidewalks on both sides of Hembredge Dr between Holly Springs Pkwy and Pinecrest Rd/railroad ROW
- Add ten-foot sidewalks along Puckett Creek to connect Old Shoal Creek Rd, Laurel Overlook, and Laurel Canyon Village Circle

Make bike/pedestrian connections between new high school/existing middle school to residential neighborhoods

- Add sidewalks, bike paths/multiuse trails along both sides of Hickory Log Dr
- Widen sidewalk on north side of and add sidewalks, bike paths/multiuse trails, along both sides of Reservoir Dr between Reinhardt College Pkwy and 1 Mission Point
- Add sidewalks, bike paths/multiuse trails along both sides of Reinhardt College Pkwy between Waleska Rd and Riverstone Terrace/Park Center Dr
- Add multiuse trails from Bluffs Pkwy to Reservoir Dr using ROW near Hickory Log Creek

Sidewalks near bus stops

- Extend sidewalk on south side of E Main St between Roy St and Jeanette St with pedestrian crossing improvements at E Main St and Crisler St
- Extend sidewalk and construct pedestrian bridge along Marietta Rd across Canton Creek between Hickory Flat Hwy and Dr John T Pettit St
- Add six-foot sidewalks along west side of Marietta Rd between Longview Dr/Railroad and Hickory Flat Hwy
- Extend and widen sidewalk on east side of Marietta Rd from Coppermine Ln south to existing sidewalk/CAT bus stop
- Add six-foot sidewalk and ADA-accessible curb cut at the bus stop at the intersection of Brown Industrial Pkwy and Etowah Industrial Ct
- Extend and widen sidewalks to ten feet wide on south side of Brown Industrial Pkwy from E Main St and Hasty Elementary School to Etowah River Park with safe bike/ped rail crossing
- Add six-foot sidewalk on Hickory Flat Hwy between Northside Cherokee Blvd and Greenswood Dr
- Add six-foot sidewalk on west side of Marietta Hwy between Hagin Dr and existing sidewalk just north of Heights Pl
- Add six-foot sidewalk on west side of Shipp St between the northern end to E Main St
- Extend sidewalks and add pedestrian signals and crosswalks to the intersection of Mashburn Rd and Medical Ln
- Extend sidewalk along east side of Oakside Dr between Oakside Ct and the cul-de-sac
- Add concrete landing pad at vegetated center of cul-de-sac at end of Oakside Dr
- Add six-foot sidewalk on both sides of Mashburn Rd between Medical Ln and Hospital Rd
- Extend sidewalk on east side of Waleska Rd from Old Donaldson Rd to Reinhardt College Pkwy
- Add six-foot sidewalk to south side of Spring St between Transit Ave and Milton Dr
- Add six-foot sidewalk to both sides of Shoal Creek Rd between Waleska Rd and N Etowah Dr
- Add six-foot sidewalk along both sides of Anderson Ave between Marietta Hwy and Waleska St

Trails and Parks

- Add a park behind Publix on Marietta Hwy
- Repurpose old high school to community center
- Simplify intersections at and add park space to intersection of Marietta Road, Marietta Hwy, and Bells Ferry Road
- Utilize utility ROW between Marietta Hwy/SR 140 intersection and Jessie McCollum Dr/Cherokee Memorial Park
- Add connectivity to trails for older neighborhoods
- Trails to elementary schools

- Improve downtown connectivity to Brown Park
- Add dog park at Etowah River or Heritage Park
- Improve storm drainage at Heritage and Etowah River Parks

Trail loop connectivity

- Extend trail south of Boling Park to nearest intersection and then make sidewalk upgrades and widen sidewalks to 10 feet to the road to maintain connectivity
- Connect both ends of planned/proposed trails via railroad ROW between The Mill on Etowah and Mountain Vista Blvd
- Add off-street multiuse trail connection along City Limits between Doss Ln to Birchwood Dr
- Add off-street multiuse trail connection between Northside Cherokee Blvd, Northside Hospital, and Cherokee Overlook Dr
- Add off-street multiuse trail connection between planned trail at Lawson Dr to McRae Dr, Mountain Vista Blvd, and rail ROW

Studies and Plans

- Conduct a curbside access management plan for downtown
- Study use of railway ROW for multiuse trails
- Conduct a downtown parking study

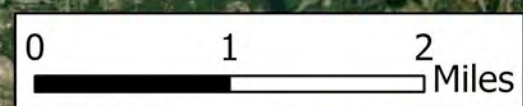
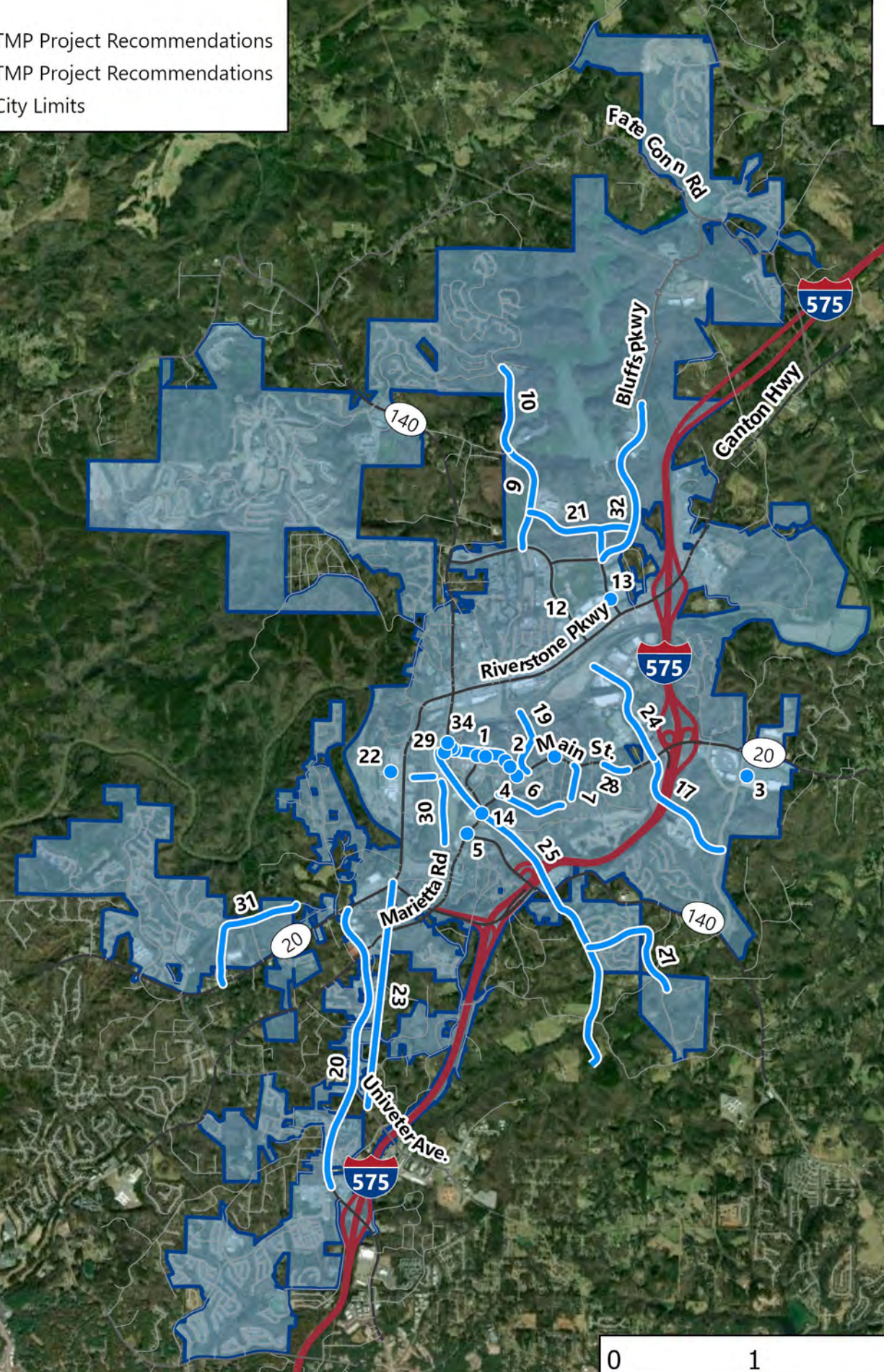
Projects Identified from Wikimap Public Comments

- Waleska St at Railroad St intersection improvements
- More turning opportunities in downtown
- Wayfinding stations in Downtown Canton
- Reconfiguration of parking in Downtown Canton
- Safety improvements on Riverstone Pkwy
- Install roundabout on North St at Waleska St
- Install roundabout on North St at E Main St
- Waleska St at Marietta Hwy intersection improvements
- Reinhardt College Pkwy at Waleska Rd intersection improvements
- Install roundabout at Bells Ferry Rd at Marietta Hwy
- Intersection/ pedestrian improvements on Northside Cherokee Blvd at Target
- Extension of W Main St to Reformation Pkwy
- Pedestrian crossing improvement on E Main St at Crisler St
- Riverstone Pkwy turn lane improvement at State Farm
- Improve turn visibility and traffic signalization from Railroad St to Waleska St
- Install sidewalk on Marietta Rd at Canton Creek for pedestrian safety
- Install pedestrian crossing bridge on Marietta Rd at Canton Creek
- Intersection safety improvement on Academy St at Archer St
- Traffic signal timing improvement at Northside Cherokee Blvd and Cumming Hwy
- Roadway and intersection improvements at Fate Conn Rd and Canton Hwy
- Traffic signal timing improvement at E Cherokee Dr and Cumming Hwy
- Install roundabout on Dr John T Pettit St at E Main St
- Traffic speed control on E Main St at Roy St
- Improve connectivity from Downtown to Brown Park
- Sidewalk extension or crosswalk on E Main St at N Crisler St
- Intersection/signal improvement from Hickory Flat Hwy to Knox Bridge Hwy
- Install Bicycle facilities and lane on E Main St at Roy St
- Intersection/turn lane improvements on Marietta Hwy at Travis Tritt Lane
- Install pedestrian crosswalk on E Main St toward North St
- Increase roadway capacity from Reinhardt College Pkwy to Waleska Rd
- Lane improvements on E Main St at E Marietta St
- Pedestrian and transit access to shopping mall at Reformation Pkwy
- Install pedestrian walkway and lane expansion on Waleska Rd
- Improve visibility and intersection on Waleska Rd to Shoal Creek Rd
- Install shoulder on N Etowah Dr
- Intersection safety improvement on Shoal Creek Rd at N Etowah Dr
- Install roundabout on Marietta Hwy at Herndon Ln
- Signalization on Hickory Flat Hwy at Philip Landrum Memorial Hwy exit ramp
- Install roundabout on E Marietta St at W Marietta St
- Signalized entry from Riverstone Blvd to Home Depot
- Signalized entry from Reinhardt College Pkwy to Riverstone Plaza
- Signalized entry from Riverstone Pkwy to Riverplace Shopping Center
- Roadway safety improvement on Knox Bridge Hwy at Hickory Flat Hwy to I-75

- Roadway safety improvement on Riverstone Pkwy at Speed emissions
- Roadway expansion of 140
- Lane striping on Old Donaldson Rd
- Roadway widening on N Etowah Dr from Beech Knoll Dr to N Etowah Ct
- Cumming Hwy roadway capacity
- Roadway widening on Waleska Rd from Riverstone Pkwy to Reinhardt College Pkwy
- Signalization on Reinhardt College Pkwy at Reservoir Dr
- Parking reconfiguration on North St at Church St
- Directional signage improvement on North St and E Main St at Brown St
- Directional signage improvement on WB E Main St at Dr John T Pettit St
- Directional signage improvement on North St at Canton Cannon Park
- Safety improvement for turning left on E Main St to Dupree St
- Lane re-striping on Cumming Hwy off 575 19A exit
- Improve pedestrian connectivity/pedestrian facilities from Riverstone area to Industrial Park
- Improve school zone signalization on Brown Industrial Pkwy at Cumming Hwy
- Signalization on Hickory Flat Hwy at Mountain Vista Blvd
- Install intersection on Cumming Hwy at shopping center between Marketplace Dr and Old Doss Dr

Legend

- Canton TMP Project Recommendations
- Canton TMP Project Recommendations
- ▭ Canton City Limits



NEEDS ASSESSMENT PRESENTATION



CANTON TRANSPORTATION MASTER PLAN

NEEDS ASSESSMENT

AUGUST 2022



Content

Project Tasks

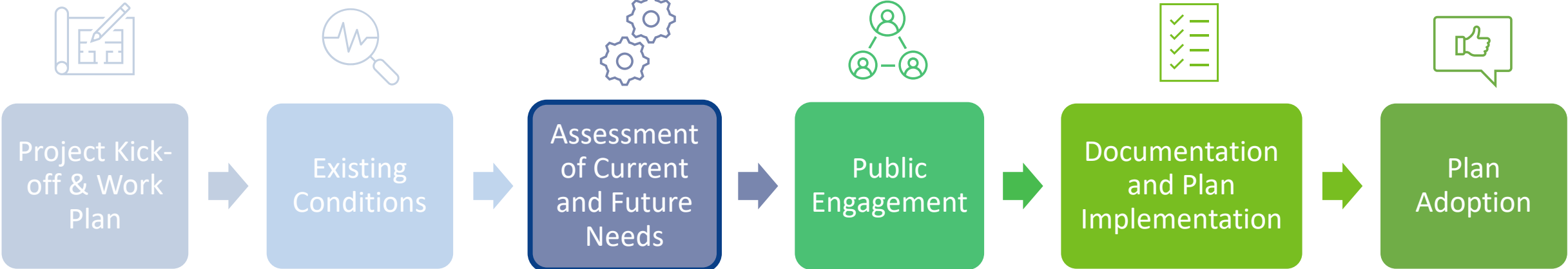
Needs Assessment

- Main Themes from Wikimap Exercise
- Main Themes from Public Meeting 1
- Summary of Input from Steering Committee Meetings
- Internal Design Workshop

Next Steps

- Major Needs Categorized

Project Tasks



A background image showing a group of people in business attire gathered around a table, reviewing documents and charts. One person is pointing at a colorful sunburst chart, while others are holding pens and looking at the documents. The scene is brightly lit, suggesting a professional meeting environment.

NEEDS ASSESSMENT

WIKIMAP – INPUT GATHERING TOOL

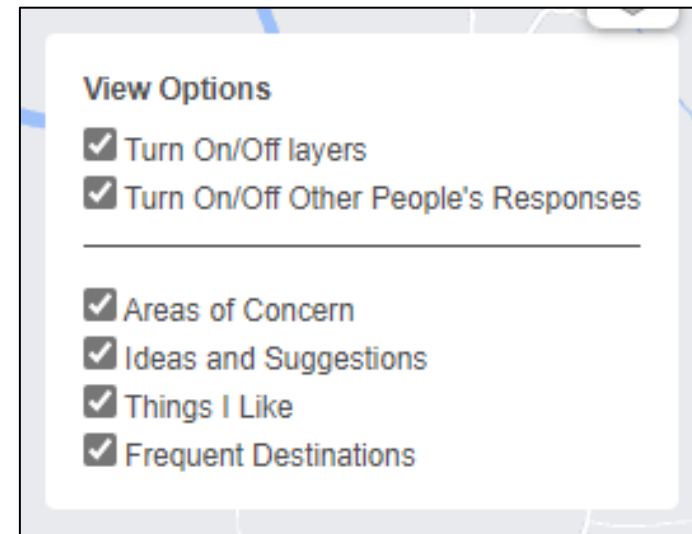
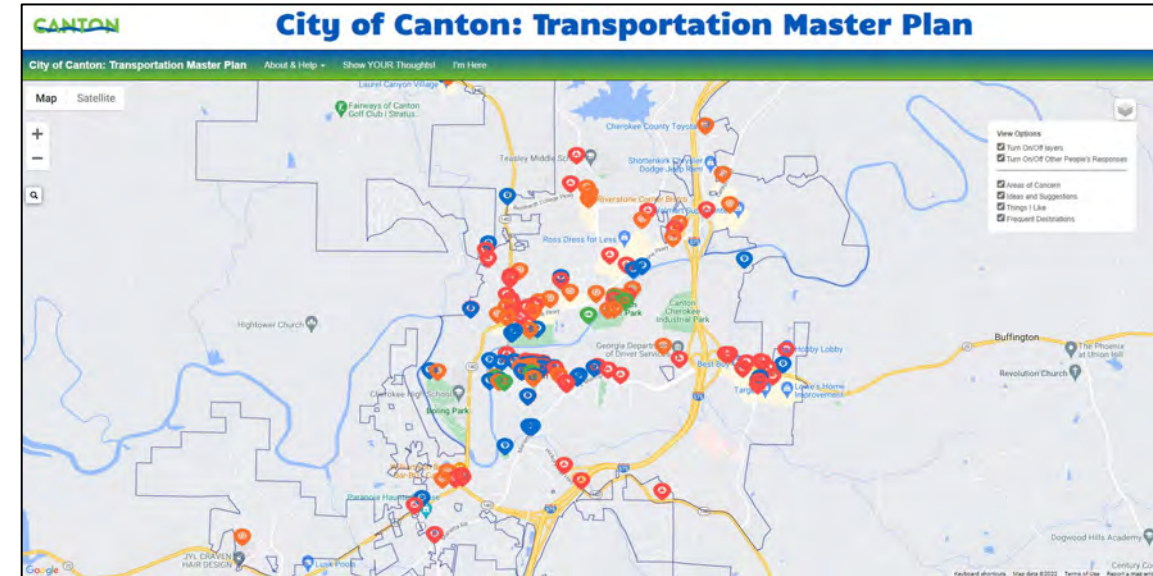
PUBLIC MEETING 1

STEERING COMMITTEE MEETINGS

INTERNAL DESIGN WORKSHOP

Wikimap – Input Gathering Tool

- Wikimap is an online tool which helps gather location-based input from community and stakeholders via a map interface.
- This tool was set up and introduced to the Steering Committee at the **beginning of March 2022**.
- The link was shared by the city and the Steering Committee members to other stakeholders and community via social media and website.
- The Wikimap tool gathered comments under four categories.
- The tool was kept open for input until the **end of July 2022**.



Main Themes from the gathered input

- **Areas of Concern**
 - Congestion at SR 140 and SR 20 intersection
 - Congestion along intersections on Marietta Highway and SR 140
 - Congestion along SR 20 at Northside Cherokee Boulevard intersection
 - Pedestrian safety concerns along East Main Street
 - Congestion and queuing problems along Riverstone Parkway at several locations
 - Lack of signalized entrances to and from retail/commercial stores and supermarkets
 - Downtown:
 - Speeding
 - Lack of wayfinding leads to wrong turns and accidents
 - Waleska Street and Railroad Street is a dangerous intersection
 - Delivery vehicles causing congestion

Main Themes from the gathered input

- **Ideas and Suggestions**

- More bicycle and pedestrian-friendly environment.
- Pedestrian safety along roads and trails.
- Enhance connectivity to Downtown, The Mill, and over the river to Riverstone area and Boling Park. Security cameras on trail
- Resolve congestion and queuing issues along major highways.
- Intersection reconfigurations at some key intersections including the Target complex.
- Downtown area:
 - Traffic calming in downtown and residential areas.
 - Better wayfinding around the historic park and main streets. Brown Park is hidden.
 - More opportunities to turn around in downtown.
 - Roundabouts at the two ends where north and Main meet.
 - Visitor center and permanent public bathrooms.

Main Themes from the gathered input

- **Things I like**
 - The Mill on Etowah
 - New parking deck at the corner of Archer St. and Church St.
 - Walking trails, multiple playgrounds for multiple age ranges at Etowah River Park.
 - Trail connectivity between Riverstone area and Industrial Park area.
- **Frequent Destinations**
 - Monthly – Downtown, Restaurants, Parks and Trails, Supermarkets.
 - Weekly – Supermarkets, Parks and Trails, Gas Stations.
 - Daily – Schools for pick-up and drop-offs, Businesses for work.



NEEDS ASSESSMENT

WIKIMAP – INPUT GATHERING TOOL

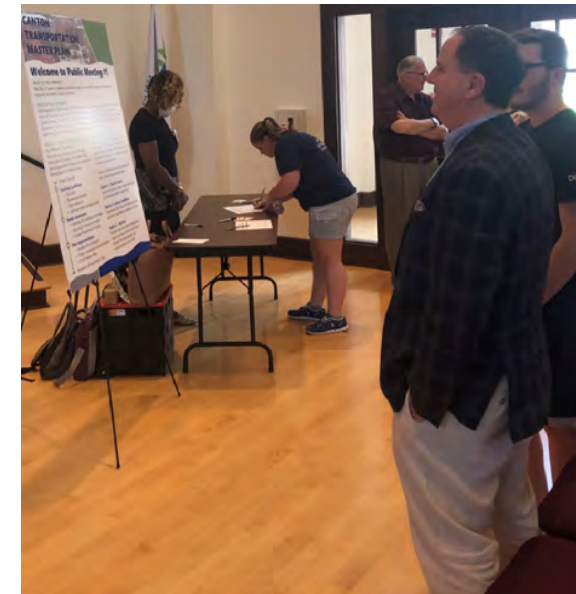
PUBLIC MEETING 1

STEERING COMMITTEE MEETINGS

INTERNAL DESIGN WORKSHOP

Public Meeting 1 – (15 attendees)

- Conducted in-person at Canton City Hall on July 7, 2022.
- Nearly half (9 of 23) of all comments received were comments regarding the downtown and central Canton areas.
- Following the meeting, City Council was briefed on the project status.



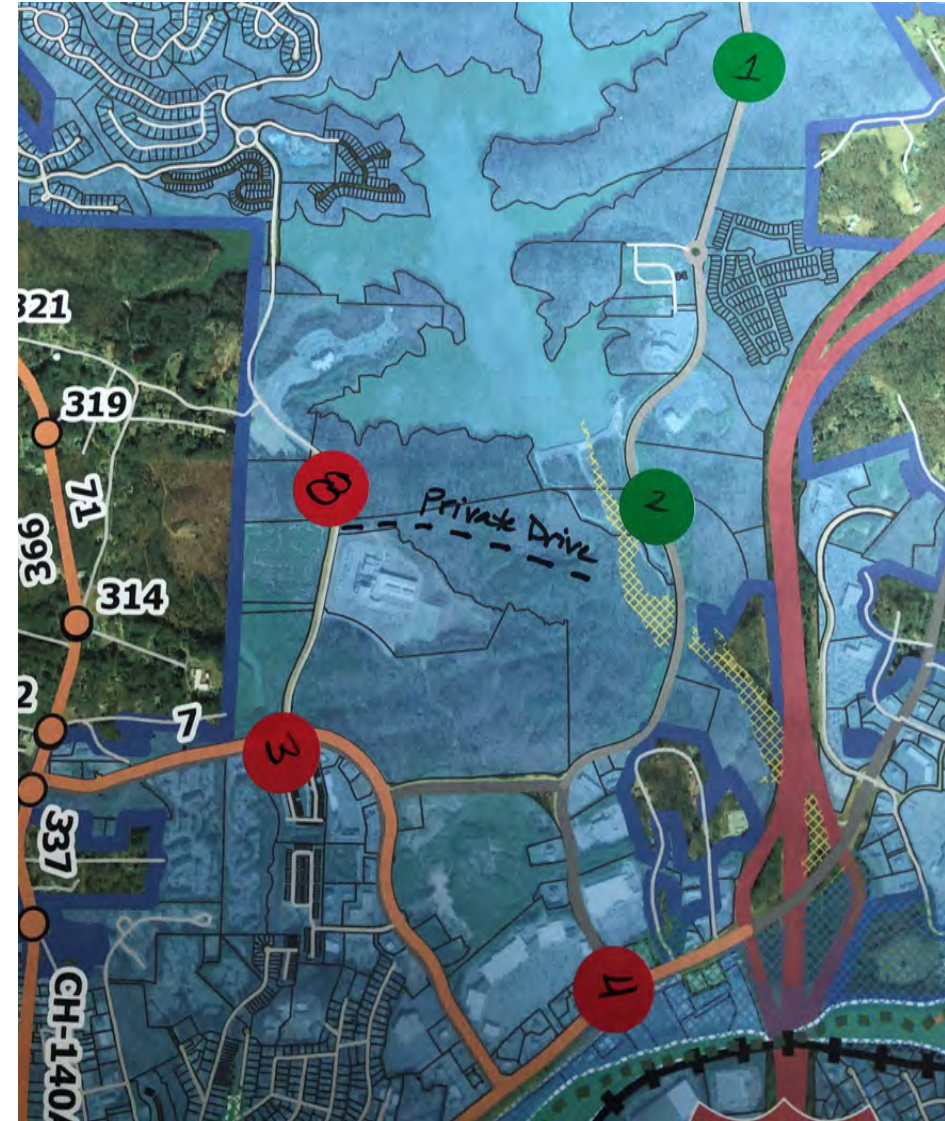
Public Meeting 1 - Main Themes

- **Sidewalk connections and improvements** in residential neighborhoods north of Teasley Middle School.
- **Safety enhancements at several intersections** along Riverstone Parkway and near schools.
- **Traffic congestion** in downtown and along Marietta Road.
- Delivery vehicles causing congestion in downtown.
- Congestion along SR 20.
- Explore golf cart connections, parking, and charging facilities.
- **Speeding** in downtown and residential areas.
- Better **transit** connections and service.



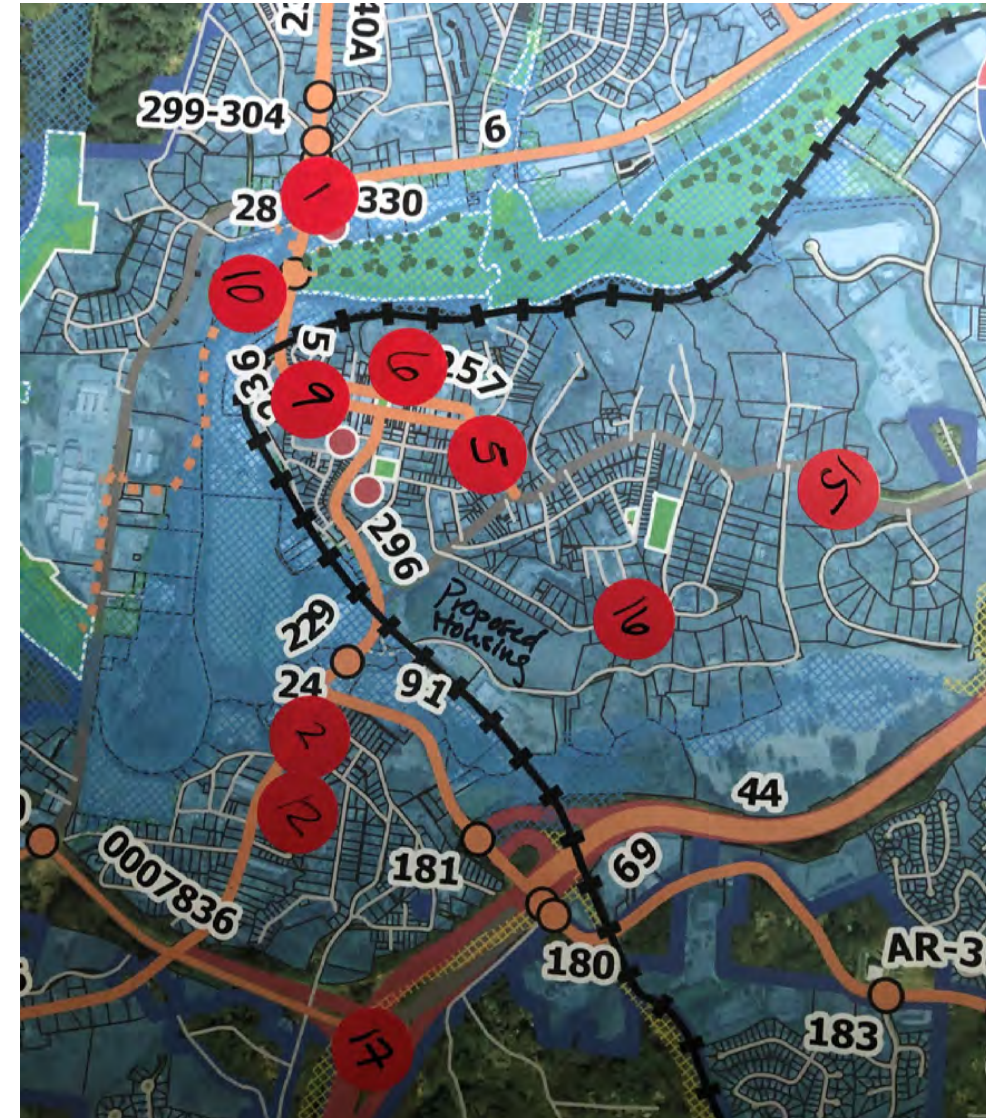
Public Meeting 1 – Recorded Comments

- G1: Bluffs Pkwy near Cherokee County School District:** Partial sidewalk. Better ped connection – pathway /speeding.
- G2: Bluffs Pkwy north of Hickory Log Creek:** Missing sidewalk. Sidewalk to be installed with development.
- R3: Intersection of Reinhardt College Pkwy and Reservoir Dr:** Dangerous intersection.
- R4: Riverstone Pkwy at Milton Dr:** Weaving, Chick-fil-A traffic, crossing many lanes.
- R8: Reservoir Dr between Amos Rd and Hickory Log Dr:** Frequent driveway cuts with limited visibility.



Public Meeting 1 – Recorded Comments

- R1: Intersection of Waleska, Riverstone, and SR 140:** Major congestion area, lots of turns.
- R2: Marietta Rd between Hickory Flat Hwy and Copper Mine Ln:** Traffic congestion on Marietta Rd (construction ongoing).
- R5: Intersection of North St and East Main St:** East Main merge is confusing.
- R6: North St, near Historic Downtown Canton Cannon Park:** Deliveries.
- R9: Intersection of Waleska, North St, and W Main St:** Roundabout – four accidents recently (just after RR).
- R10: Between Downtown and The Mill:** Provide golf cart transportation from Downtown to Mill. Would provide carts if City provided drivers (12-18 passengers). Would need charging station.



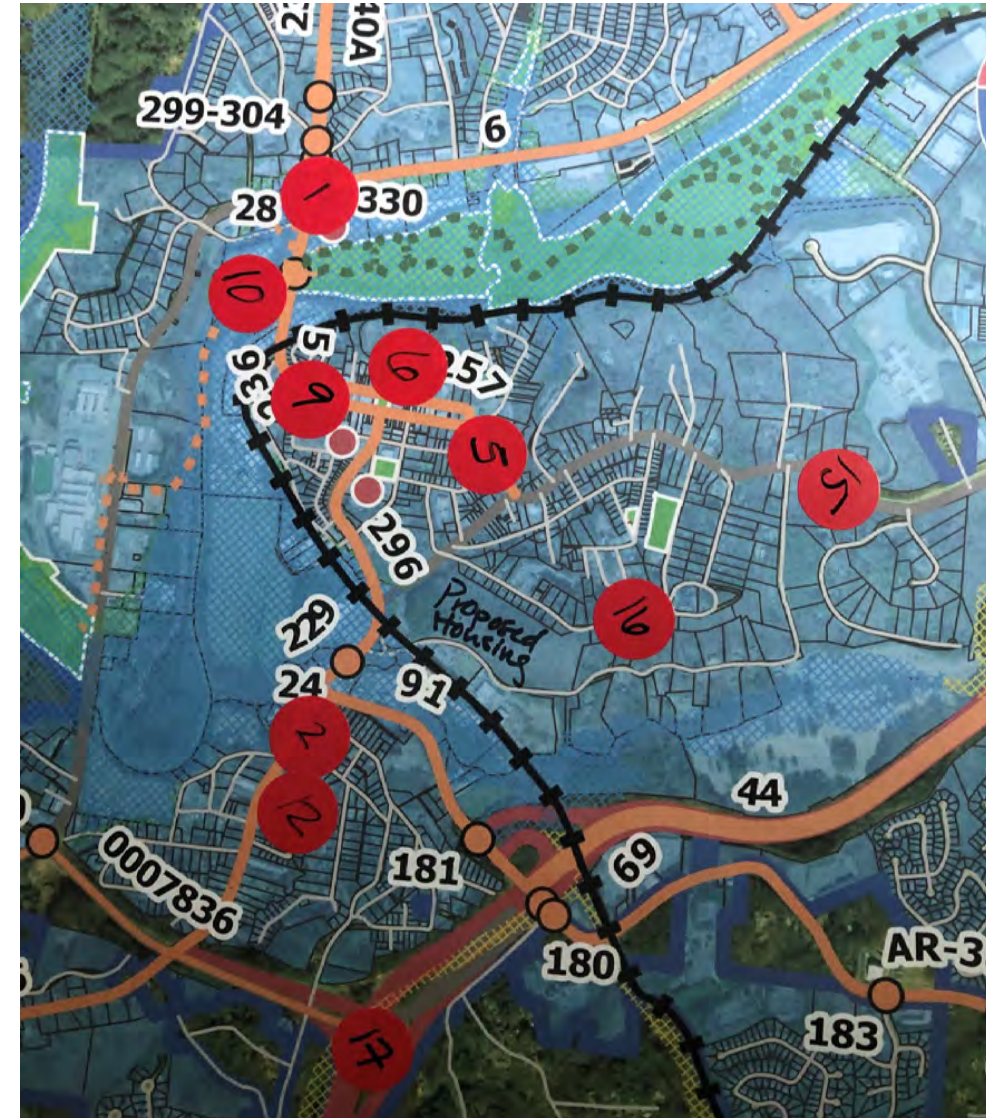
Public Meeting 1 – Recorded Comments

R12: Edwards St: Bus cut out for paratransit stop.

R15: E Main St between Britt St and Breeze Hill Ln: Merge from four to two lanes – confusing. Left lane ends, merge right. Turn lane for buses?

R16: Cherokee St: Concerns about additional thru traffic (commercial) with new developments. Interested in traffic calming in the area.

R17: I-575 and SR 140 interchange: Two turn arrows, only one lane (GDOT signal) makes it confusing which lanes are turn lanes.



Public Meeting 1 – Recorded Comments

R7: Prominence Point Pkwy near Azalea Loop: Concern about new homes and no planned transportation improvement.

R11: Intersection of Knox Bridge Hwy and Butterworth Rd: Horrible congestion in the morning – even worse with school in. Cars going into neighborhood to U-turn and miss light.

R13: Prominence Point Pkwy at Lantana Trail: Turn lane at Publix.

R14: SR 20: Has been referred to as “Road Rage Corridor”.



Public Meeting 1 – Recorded Comments

General Comments not associated with a geographic location:

- “Would love to have a golf cart city”
- “Public transportation – major concern – funding – Expand hours and service area (8-4) earlier and later for workforce. Fixed routes, shuttles, Canton-Woodstock connection”
- “Speed limits reduced around downtown”
- “Reconfigure parking to accommodate golf carts and charging”.

A background image showing a group of people in business attire gathered around a table, reviewing documents and charts. One person is pointing at a colorful sunburst chart, while others are holding pens and looking at the documents. The scene is brightly lit, suggesting a professional meeting environment.

NEEDS ASSESSMENT

**WIKIMAP – INPUT GATHERING TOOL
PUBLIC MEETING 1**

STEERING COMMITTEE MEETINGS

INTERNAL DESIGN WORKSHOP

Steering Committee Meeting 1 – (11 attendees)

- Conducted virtually on **March 1, 2022**.
- Steering Committee input gathered on Project Vision and Goals and other issues and concerns in the area via **open-ended questions and Mentimeter survey**.
- Several areas identified at the meeting and **added to the field visit** for verification and observation.

Please rank the goal categories based on what is most important to you or the organization you are representing

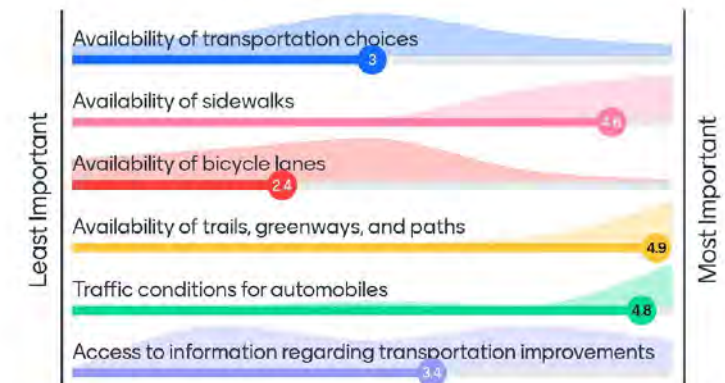


Go to www.menti.com and use the code 8100 2952

What types of transportation improvements would you like to see? (Generally or location specific)

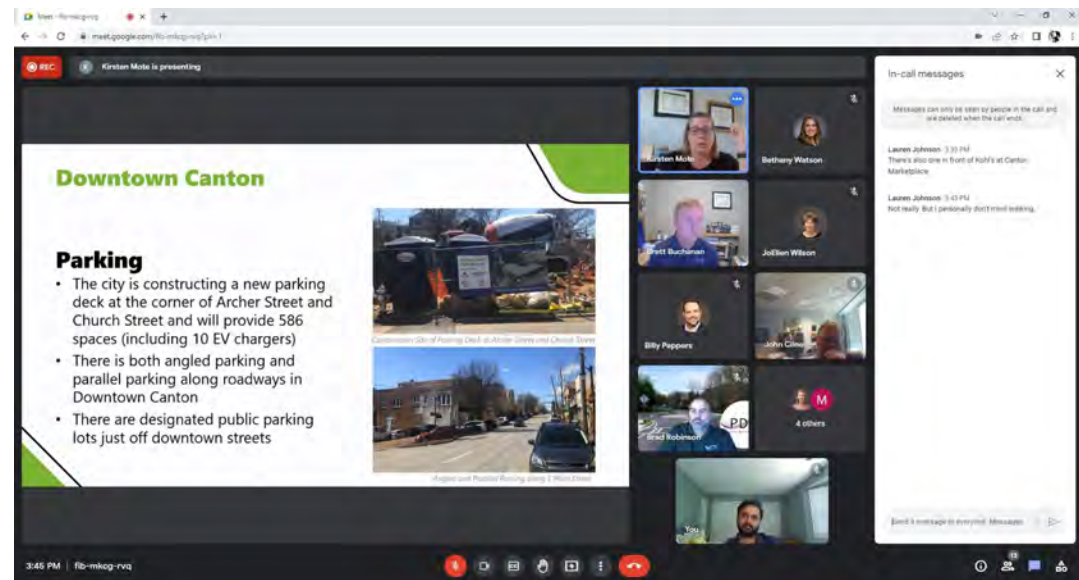
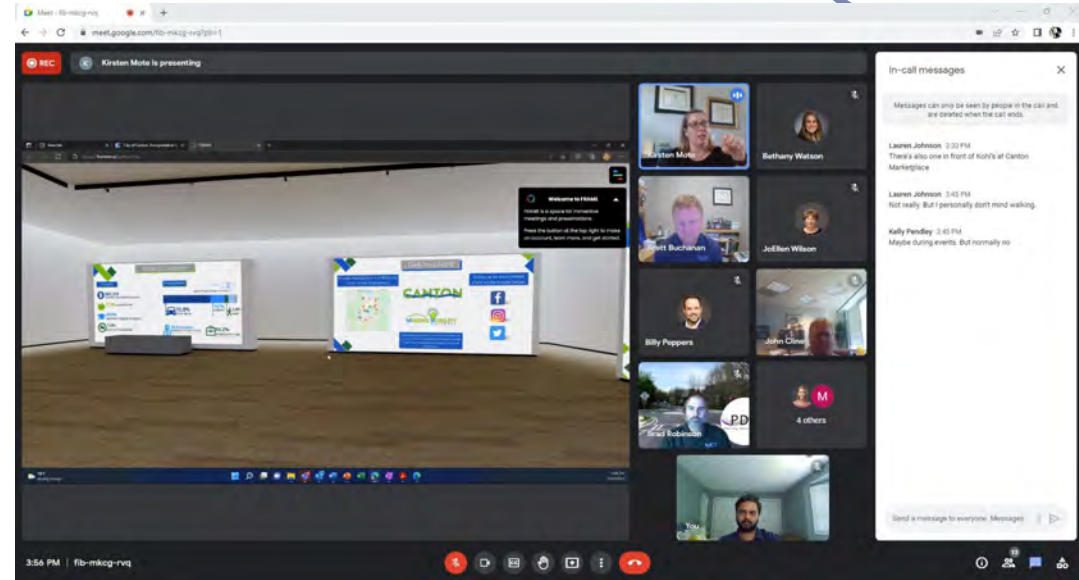
Marietta Hwy Pedestrian Improvements	General Congestion Relief	Traffic signal at Knox Elem school
Traffic congestion at the front of River Green	Congestion Relief by 675 ramps	Electric CATS buses, golf cart paths through the Bluffs, electric vehicle stations near all major shopping areas, traffic congestion relief on 20
Raised median between McDonalds and Chick Fil A	HWY 140 and HWY 5 intersection is always painful	better sidewalk connections from all neighborhoods

How would you rank the following aspects of transportation in the City of Canton?



Steering Committee Meeting 2 – (10 attendees)

- Conducted virtually on **May 24, 2022**.
- Steering Committee **input gathered on Existing Conditions**.
- Demonstrated use of **Wikimap** (was open until July end) and **FRAME room**.



In-call messages X

Messages can only be seen by people in the call and are deleted when the call ends.

Lauren Johnson 3:33 PM
There's also one in front of Kohl's at Canton Marketplace

Lauren Johnson 3:45 PM
Not really. But I personally don't mind walking.

Kelly Pendley 3:45 PM
Maybe during events. But normally no

Lauren Johnson 3:57 PM
This has been very informative. Thanks!

Yes, working on it. The file was extremely large.

Lauren Johnson 3:59 PM
The info. is here on our website.
<https://www.cantonga.gov/Home/Components/News/News/1229/14>



NEEDS ASSESSMENT

WIKIMAP – INPUT GATHERING TOOL
PUBLIC MEETING 1
STEERING COMMITTEE MEETINGS
INTERNAL DESIGN WORKSHOP

Internal Design Workshop

- Conducted **in-person** on **June 9, 2022**.
- The team evaluated projects from three lenses:

Livability

- Wayfinding
- Access Management
- Safety
- Multimodal Connectivity
- Transit
- Active Transportation

Economics

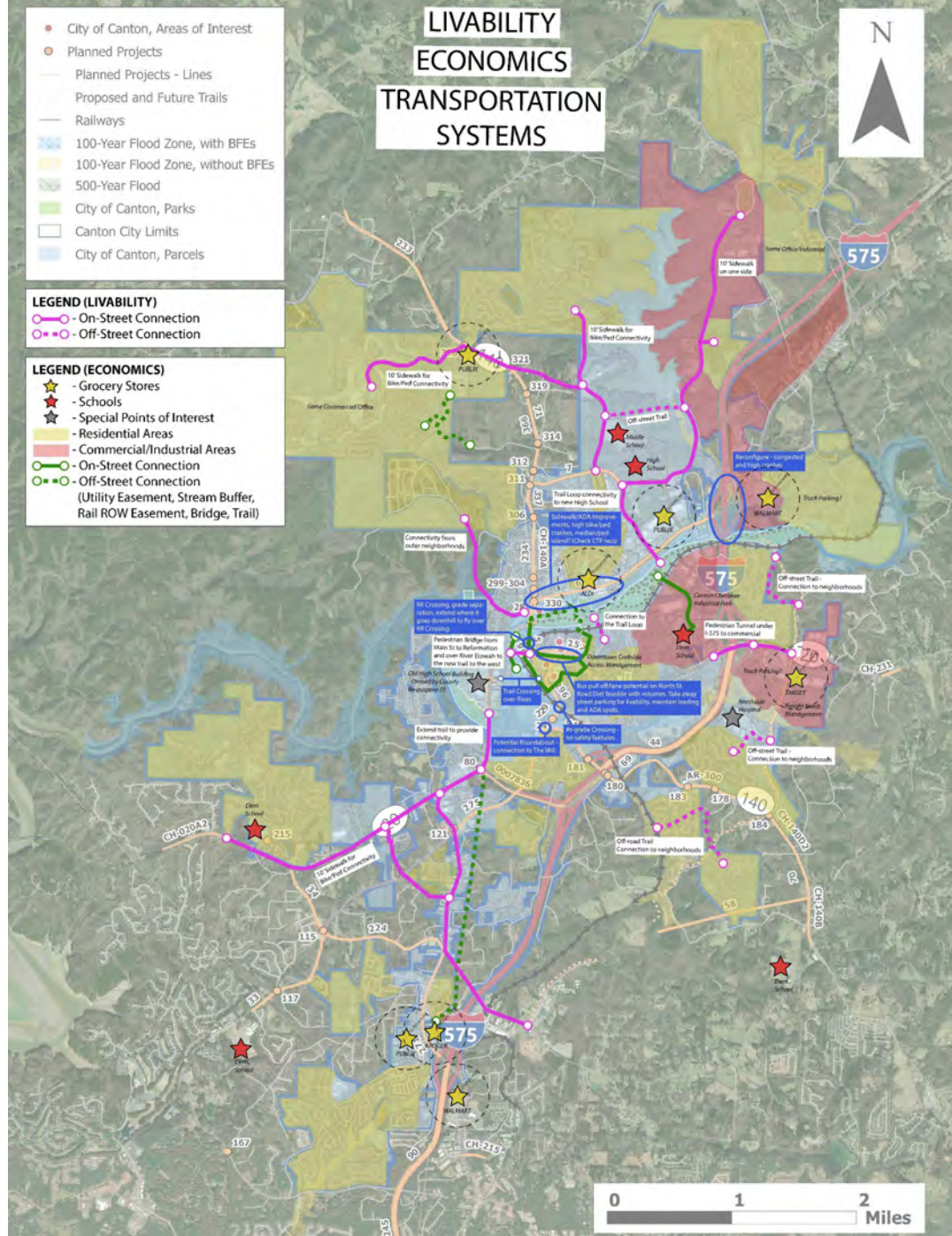
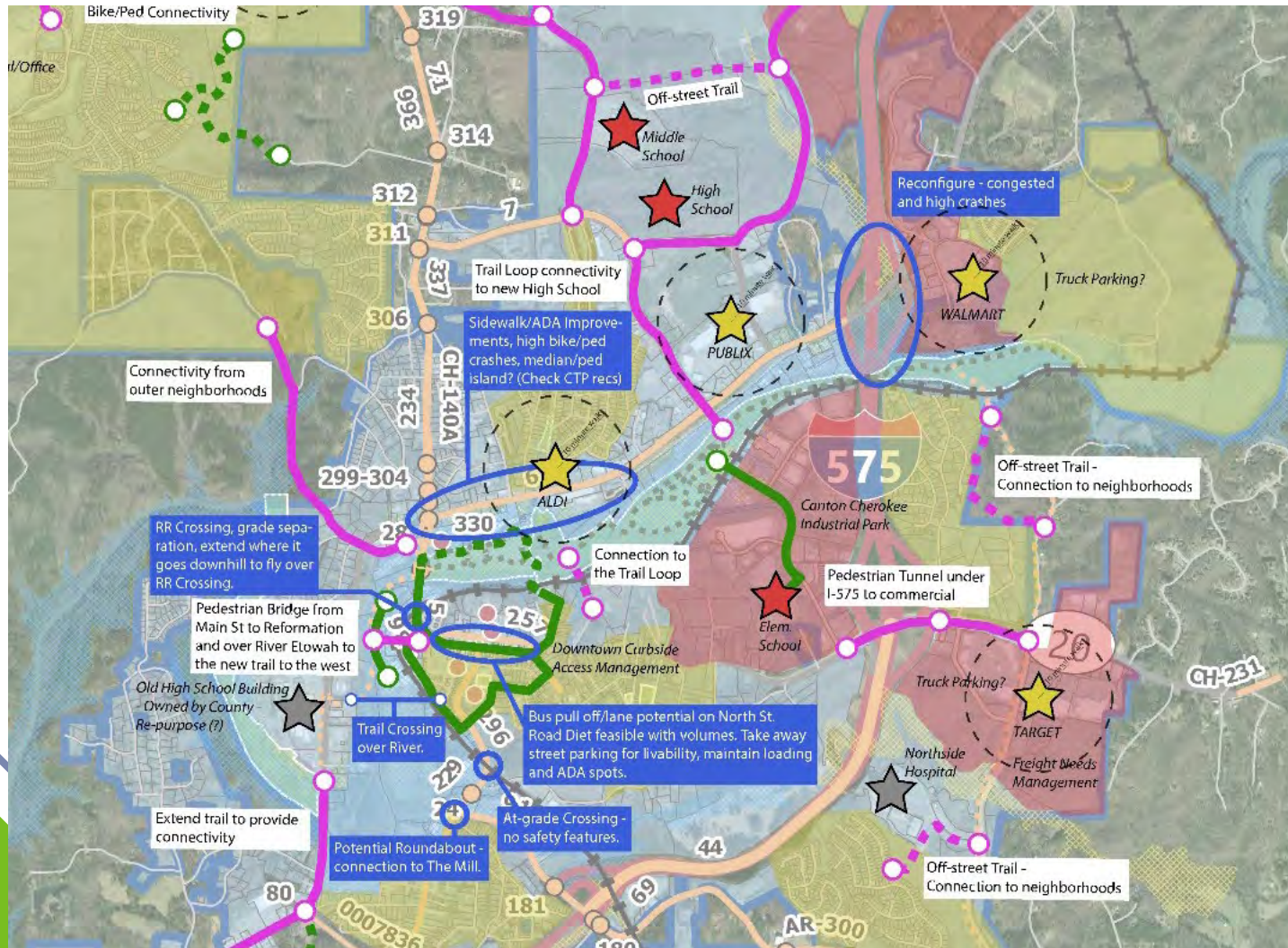
- Future Projects and Development
- Land Use
- Freight

Transportation Systems

- Fixed Route Performance
- Parking Accommodation
- Railroad Interaction
- Traffic Operations
- Smart Mobility



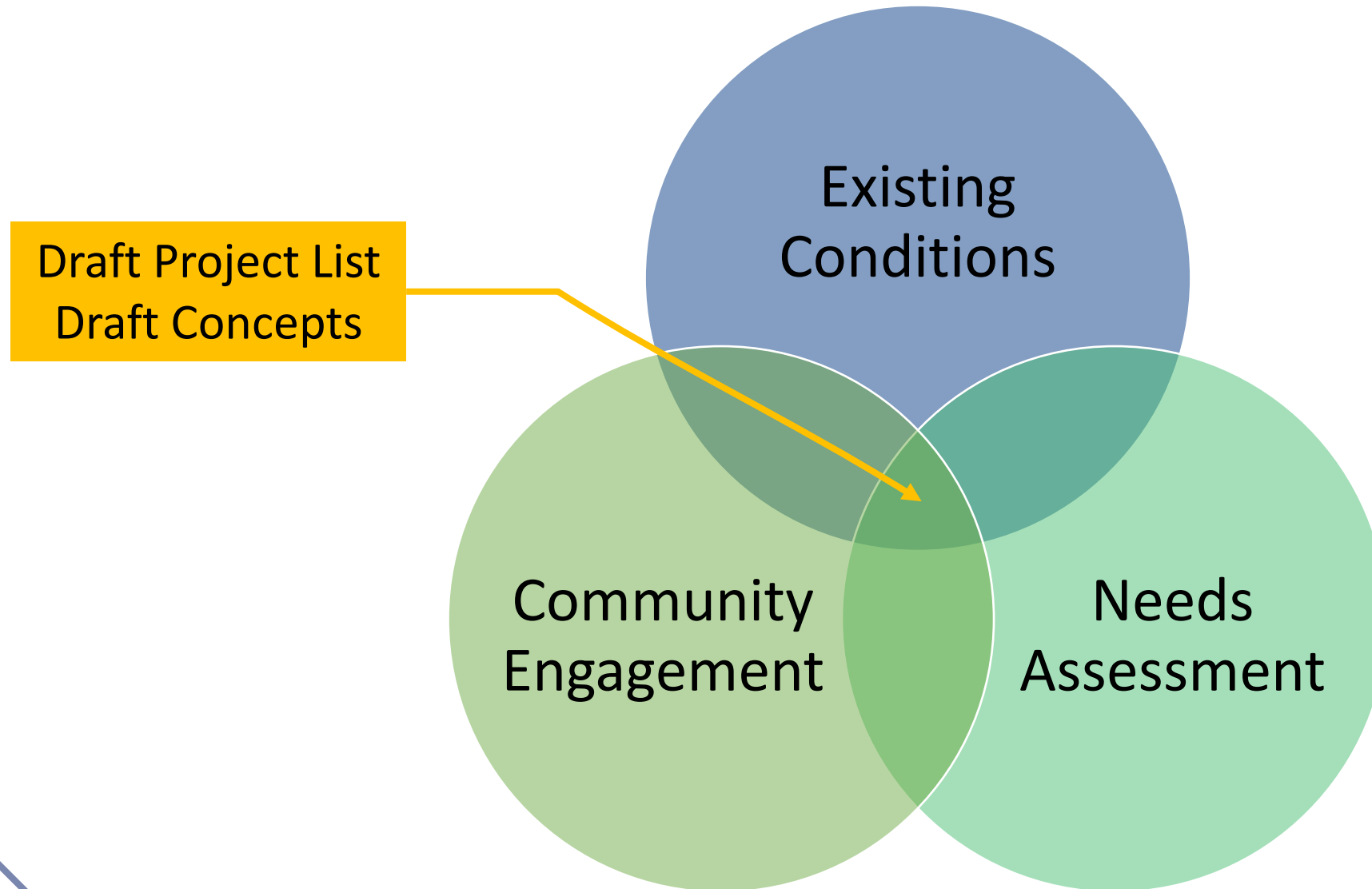
Internal Design Workshop - Summary



Internal Design Workshop - Summary

- **Bike/Pedestrian**
 - Sidewalk Infill Program.
 - Connections to neighborhoods, destination centers, amenities, and schools.
 - Enhance safety at railroad crossings.
- **Intersection**
 - Improvements such as vehicle flashing light, signalization, roundabout etc.
- **Operation**
 - Striping reconfiguration, 4-way stops, etc.
- **Recreation**
 - Identifying potential location for new community amenities.
- **Roadway**
 - Reconfiguration and traffic calming.
- **Transit**
 - Service area extension, Park and ride locations, coordination, etc.
- **Wayfinding**
 - Additional signage for parking and public facilities.

Draft Recommendations



Contact Information

City of Canton

Bethany Watson, PE, AICP

City Engineer

Bethany.watson@cantonga.gov

(770) 704.1521

Modern Mobility Partners

Kirsten Mote, AICP

Project Manager

kmote@modernmobilitypartners.com

(404) 694.2680

Chirag Date, AICP Candidate, LEED GA

Deputy Project Manager

cdate@modernmobilitypartners.com